

# Greenlee tools

*For the Craftsman*



GREENLEE  
TOOL COMPANY  
ROCKFORD, ILL.  
GREENLEE TOOLS  
ARE THE CHOICE OF THE  
CRAFTSMAN

CATALOG NUMBER 33

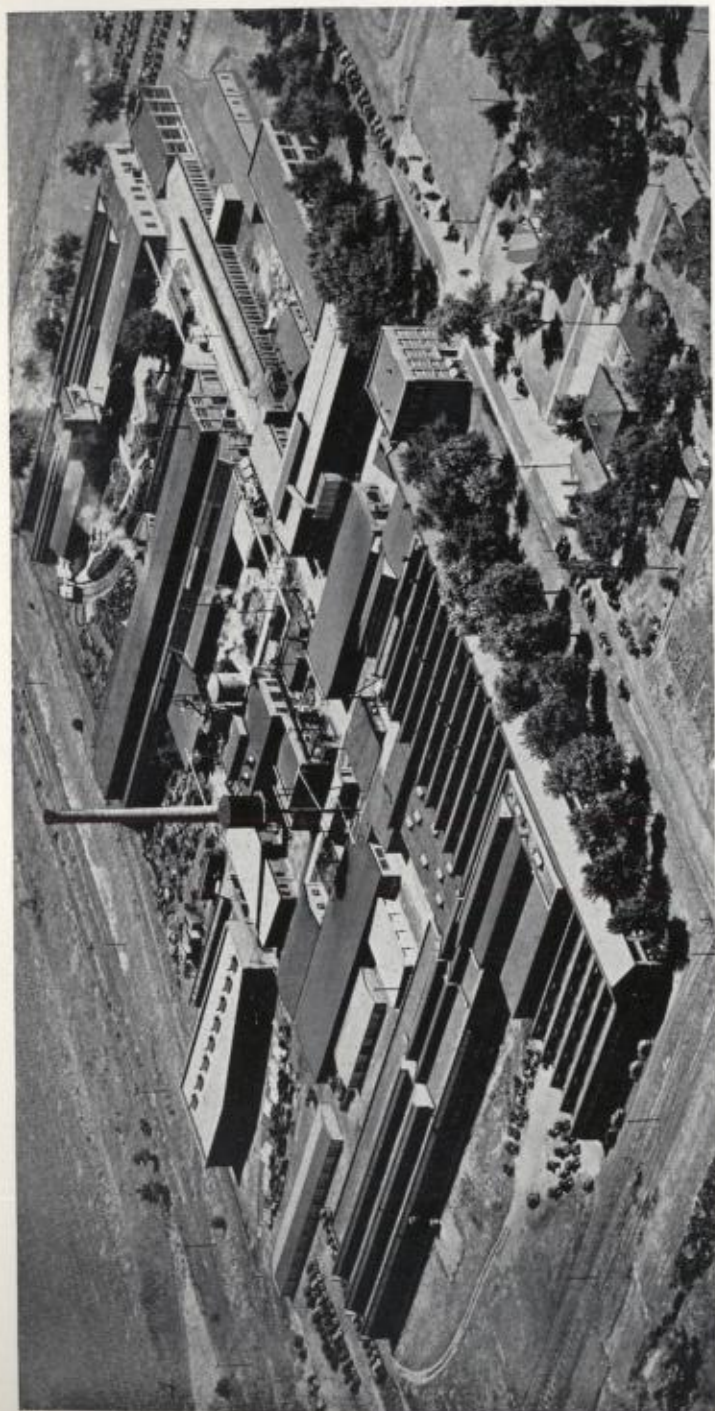
15-

50577



SURPLUS-1  
LIBRARY OF  
CONGRESS  
DUPLICATE





THE GREENLEE PLANT AT ROCKFORD, ILLINOIS

Above is shown an airplane photograph of the Greenlee Plant, which is located on twenty-five acres of land in the industrial section of Rockford. The buildings, which are of modern construction and largely fireproof, occupy a space having a frontage of about 1200 feet and a depth of about 700 feet.

# GREENLEE TOOLS

## for the CRAFTSMAN

*Spiral Screw Drivers, Automatic  
Push Drills, Auger Bits, Expansive Bits,  
Wood Drills, Car Bits, Bit Extensions, Ship  
Augers, Boring Machine Augers, Nut Augers, Ring  
Augers, Socket and Tang Chisels and Gouges,  
Turning Tools, Draw Knives, Knockout Punches  
and Cutters, Joist Borers, Hydraulic Conduit  
and Pipe Benders, Hydraulic Pipe Pushers,  
Steel and Copper Tube Benders, Cable  
Pullers, Radio Chassis Punches. Also  
Various Tools for use in machines.*



CATALOG NO. 33

1941-1942

## GREENLEE TOOL CO.

(Division of Greenlee Bros. & Co.)  
ROCKFORD, ILLINOIS, U. S. A.

*Cable Address, GREENLEE*  
Codes—Bentley, Lieber's or Western Union

Printed in U. S. A.





## *Tools for the Craftsman*

### Introduction

This Catalog has been arranged to show all the regular types of Hand Tools manufactured by us for the Woodworker, Electrician and Plumber and for sale to the hardware, electrical, and mill supply trades. Tools for machine use are covered by a separate catalog, which will be furnished on request.

For seventy-five years we have built high-grade woodworking machinery, and during most of this time have manufactured mortising and boring tools for use in them. Such tools require the best grades of steel, special machinery, and expert workmanship in order to meet their exacting needs. When we later produced Hand Tools we did so with a force trained to manufacture high-quality goods. This has been and is our fixed policy.

We, therefore, guarantee every tool bearing the Greenlee name to be free from imperfections of material or workmanship, and superior in quality and service. One of the terms of our guarantee is that tools claimed defective must be returned for our inspection.

We have the capacity to meet all normal demands of our trade, due to our most complete and up-to-date equipment, both buildings and machinery. Present and prospective customers are cordially welcomed at our plant, as we are more than glad to show our processes of manufacturing, and demonstrate the fact that materials are of the highest quality and methods up-to-date. Our business and our plant belong to the present and not to the past. We do not have any trade secrets or trade delusions.

## *Tools for the Craftsman*



### To The Trade

The entire Greenlee Hand Tool Line is briefly described throughout this catalog. We show identification numbers, and also give stock information and packaging data for all items.

Prices are subject to change without notice, although we endeavor to notify customers when any change occurs in the way of an advance, and give them the benefit of any reduction on orders received after such is made. Tools of a special nature must be figured on the basis of time and material, or in accordance with established quantity-extra schedules.

Our terms to customers having adequate rating or with satisfactory reference are net cash in thirty days from date of invoice and shipment, or 2% cash discount 25th inst. on invoices dated 1st to 15th, and 2% 10th prox. on invoices dated 16th to 31st. If parties are unknown or without rating, we must ask for remittance in advance or ship on the basis of cash against documents.

Prices are figured on the basis of standard packages. When it is necessary to furnish broken packages, increased handling costs are involved, and 10% is added to the net charge to cover them.

All orders are formally acknowledged, and goods are carefully packed and checked. Packing lists are supplied with each shipment. Claims for shortage or errors must be made on receipt of goods. Our delivery is to the transportation company in all cases, except for export trade. Shipments lost or damaged in transit are not at our risk, but we will prosecute claim for same in behalf of the purchaser.

If not otherwise instructed, we use our judgment in shipping orders by freight, express, or parcel post. When shipping by parcel post, we reserve the right to register or insure, charging for same in addition to postage.



*Tools for the Craftsman*



### Greenlee Spiral Screw Drivers With Enclosed Spiral

The Greenlee Spiral Screw Driver, with enclosed spiral, is a convenient and servicable tool with several outstanding and exclusive Greenlee features, which make it superior to the ordinary spiral screw driver.

The completely enclosed spiral was designed to prevent the operator from getting his hand caught in the spiral, to prevent dirt and grit from entering the working parts, and to permit thorough lubrication of the tool. All exposed parts, except the handle and drive bits, are chromium plated, with the inner sleeve having a dull finish and the other parts highly finished.

Greenlee Screw Drivers are built for years of hard service. Both drive nuts are made of phosphor bronze, formed under a pressure of 100 tons. These two drive nuts in connection with the spiral take most of the wear.

All adjustments are simple and positive, with the shifter button close to the handle for operating with the thumb without changing the position of the hand. The spiral is locked by a simple forward movement of the outside sleeve.

These tools are made in three sizes, each being furnished in two styles. These are the regular spiral ratchet type and the spiral ratchet type with spring return. Each tool is cellophane wrapped and packed individually in a box with three sizes of drive bits.

#### LIST PRICE AND WEIGHT PER DOZEN

*Weight in Pounds*

Regular Spiral Screw Drivers	Price	Weight
No. 441 Small	\$31.80	7
No. 442 Medium	42.80	14 $\frac{1}{4}$
No. 443 Large	57.45	21
Spring Return Spiral Screw Drivers		
No. 451 Small	37.80	7 $\frac{1}{2}$
No. 452 Medium	48.90	16
No. 453 Large	66.00	22 $\frac{1}{2}$

*Tools for the Craftsman*



### Greenlee Spiral Screw Drivers With Open Spiral

To meet the demand for the ordinary type of Spiral Screw Driver, a new screw driver with an open spiral has been added to the Greenlee Line.

This new Greenlee Open-Spiral Screw Driver does not have the outside covering sleeve, but it does have the same type of long-wearing phosphor bronze drive nuts and the same sturdy construction used in the Enclosed-Spiral Screw Driver.

All adjustments are simple and positive. Locking for the final drive of a screw is quickly and conveniently done by turning a knurled lock collar. All exposed parts except the handle, bit, and spiral are chromium plated and highly polished.

These tools are made in three sizes, each being furnished in two styles. These are the regular spiral ratchet type and the spiral ratchet type with spring return. Each tool is cellophane wrapped, and packed individually in a box with three sizes of drive bits.

#### LIST PRICE AND WEIGHT PER DOZEN

*Weight in Pounds*

Regular Spiral Screw Drivers	Price	Weight
No. 447 Small	\$31.80	8
No. 448 Medium	42.80	15 $\frac{1}{2}$
No. 449 Large	57.45	24 $\frac{1}{2}$
Spring Return Spiral Screw Drivers		
No. 457 Small	37.80	9
No. 458 Medium	48.90	17
No. 459 Large	66.00	25 $\frac{1}{4}$





*Tools for the Craftsman*



## Nos. 482 and 483 Automatic Push Drills

Both of the Greenlee Automatic Push Drills designated by the above numbers are spring controlled and are supplied with eight sizes of drill points 1/16 to 11/64-inch. All exposed parts of these tools, except the handles and drill points, are chromium plated and are highly finished.

The handles of both tools serve as magazines for the eight drill points, and these are readily accessible by turning the metal cap adjacent to the outer guide sleeve. The No. 482 has a hardwood handle with a transparent plastic ring next to the metal cap, making the cutting parts of the points visible. The No. 483 is furnished with a completely transparent handle, giving full visibility of drill points, thus permitting easy choice of size to be used. Both handles are well proportioned and, due to materials used, no metal contacts the operator's hand.

The working parts of these tools are fully enclosed, preventing the entry of dirt and grit. The drive nut, which, in connection with the spiral, takes the full thrust of the drilling action is made from phosphor bronze, formed under a pressure of 100 tons. These two features prolong the life of these tools, greatly increasing the length of service.

Tools are individually boxed.

### LIST PRICE AND WEIGHT PER DOZEN

	Weight in Pounds	
	Price	Weight
No. 482 Wood Handle	\$29.40	6
No. 483 Transparent Handle	33.60	6 3/4

*Tools for the Craftsman*



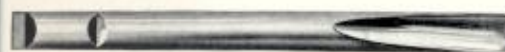
NO. 707 ADAPTER



NO. 705 COUNTERSINK



NO. 709 BIT WRENCH



SCREW DRIVER BITS



DRILL POINTS

## Accessories For Greenlee Spiral Screw Drivers and Automatic Push Drills

**NO. 707 SPIRAL SCREW DRIVER ADAPTER:** With this adapter, Greenlee Drill Points and Countersinks can be used in the Spiral Screw Driver. The adapter is made to fit all sizes of Greenlee Spiral Screw Drivers.

**NO. 705 COUNTERSINK:** A single-cut, high-quality Countersink for use in either the Greenlee Automatic Push Drill or the Greenlee Spiral Screw Driver equipped with Adapter.

**NO. 709 HOLLOW-HEAD, CAP & SET SCREW BIT WRENCH:** A new Bit Wrench for fast, easy driving of socket cap and set screws. Seven sizes are carried in stock to handle all hollow-head cap and socket screws from 1/4" to 7/8" inclusive, and set screws 3/8" to 1 1/8" inclusive. The shanks of these Bit Wrenches will fit only the large size Screw Drivers, Nos. 443, 453, 449, and 459.

### LIST PRICE AND WEIGHT PER DOZEN

	Weight in Pounds	
	Price	Weight
Set of 8 Drill Points	\$10.20	3/4
Screw Driver Bits, all sizes	3.00	3/4
No. 707 Spiral Screw Driver Adapter	8.40	3/4
No. 705 Countersink	5.00	3/4
No. 709 Hollow-Head Cap & Set Screw Bit Wrench		3/4
3/16" and 7/32" size	3.00	3/4
1/4", 5/16", and 3/8" size	4.80	3/4
1/2" and 9/16" size	6.00	1 1/2



## Tools for the Craftsman



### Nos. 3 and 4 Plain Expansive Bits

Necessary as the Expansive Bit is to certain users, and despite the years this type has been on the market, most of these tools have been difficult to operate, due to their inability to clear chips. We have overcome this objection with a new design, the feature of which is the wide and open throat or chip channel. This new construction provides positive clearance of chips, permitting boring without interruption.

All parts of our Plain Expansive Bit are fully polished, with the exception of the square, which is lacquered green. The square has proper dimensions and the round of the tool has been reduced, enabling it to fit all standard makes of bit extensions.

The No. 3 Plain Expansive Bit will bore  $\frac{1}{2}$  to  $1\frac{1}{2}$ -inch and the No. 4,  $\frac{7}{8}$  to 3-inch. An extra large cutter can also be supplied for the large bit to bore holes up to 4-inch diameter. Standard packing is one in a box, and a half dozen in a carton.

#### LIST PRICE AND WEIGHT PER DOZEN

	Weight in Pounds	
	Price	Weight
No. 3 Small, $\frac{1}{2}$ to $1\frac{1}{2}$ "	\$18.00	$3\frac{1}{8}$
No. 3A Cutter, $\frac{1}{2}$ to $\frac{7}{8}$ "	3.00	$\frac{1}{8}$
No. 3B Cutter, $\frac{7}{8}$ to $1\frac{1}{2}$ "	3.75	$\frac{1}{4}$
Extra Clamps	1.44	$\frac{1}{8}$
Extra Clamp Screws	.60	$\frac{1}{8}$
No. 4 Large, $\frac{7}{8}$ to 3"	26.00	$7\frac{1}{2}$
No. 4A Cutter, $\frac{7}{8}$ to $1\frac{3}{4}$ "	5.25	$\frac{3}{8}$
No. 4B Cutter, $1\frac{3}{4}$ to 3"	6.00	$\frac{5}{8}$
No. 4C Cutter, $2\frac{1}{2}$ to 4"	9.00	$\frac{7}{8}$
Extra Clamps	1.80	$\frac{3}{8}$
Extra Clamp Screws	.70	$\frac{1}{4}$

## Tools for the Craftsman



### Nos. 5 and 6 Setfast Expansive Bits

Patent No. 1,727,452

The Greenlee Setfast Expansive Bit is a brand new idea in tools of this type, in that it has a novel means of adjusting the cutter and locking the parts. It has a very simple construction, consisting of five pieces only, namely, body, two cutters, adjusting barrel, and eccentric pin. The cutters for this tool and the adjusting barrel are fitted with an 8-pitch square thread, and this permits very rapid setting to size.

The parts of this tool are securely locked by the action of the eccentric pin in the side of the body, which engages the adjusting barrel, causing pressure against the cutter. A quarter turn with a screw driver tightens or loosens the parts, and the setting of the cutter is accomplished by turning the adjusting barrel with the thumb. This pattern also has the wide, open throat.

The No. 5 will bore  $\frac{5}{8}$  to  $1\frac{3}{4}$  inch, and the No. 6,  $\frac{7}{8}$  to 3 inch with standard cutters and to 4 inch with an extra length cutter. Standard packing is in leatherette case, one in a box, half dozen in a carton.

#### LIST PRICE AND WEIGHT PER DOZEN

	Weight in Pounds	
	Price	Weight
No. 5 Small, $\frac{5}{8}$ to $1\frac{3}{4}$ "	\$22.00	5
No. 5A Cutter, $\frac{5}{8}$ to $1\frac{1}{8}$ "	3.00	$\frac{1}{4}$
No. 5B Cutter, $1\frac{1}{8}$ to $1\frac{3}{4}$ "	3.75	$\frac{3}{8}$
Extra Adjusting Barrels	1.50	$\frac{1}{8}$
Extra Eccentric Pins	1.50	$\frac{1}{8}$
No. 6 Large, $\frac{7}{8}$ to 3"	26.00	$8\frac{1}{4}$
No. 6A Cutter, $\frac{7}{8}$ to $1\frac{3}{4}$ "	5.25	$\frac{3}{8}$
No. 6B Cutter, $1\frac{3}{4}$ to 3"	6.00	$\frac{3}{8}$
No. 6C Cutter, $2\frac{1}{2}$ to 4"	9.00	$\frac{7}{8}$
Extra Adjusting Barrels	1.80	$\frac{1}{4}$
Extra Eccentric Pins	1.80	$\frac{1}{4}$





## Nos. 7 and 8 Screw Adjusting Expansive Bits

Patent No. 1,740,055

The Greenlee Screw Adjusting Expansive Bit also has the new style open throat for positive clearance of chips. As the name denotes, the cutter is set by means of a screw, which prevents creeping. The thread on the cutters and adjusting screw is 8-pitch square, which insures rapid setting to size, and also permits definite locking of the parts when the lock screw is tightened. These tools have five parts only, no loose clamps.

All parts of the Screw Adjusting Expansive Bit are highly polished, with the exception of the square, which is lacquered green. The square has proper dimensions and the round of the tool at the shank end has been reduced, permitting it to fit all standard makes of bit extensions.

The No. 7 will bore  $\frac{5}{8}$  to  $1\frac{3}{4}$ -inch, and the No. 8,  $\frac{7}{8}$  to 3-inch. A cutter for boring to 4-inches can also be supplied for the large bit. These tools are packed in a leatherette case, one in a box, and half dozen to a carton.

### LIST PRICE AND WEIGHT PER DOZEN

*Weight in Pounds*

	Price	Weight
No. 7 Small, $\frac{5}{8}$ to $1\frac{3}{4}$ "	\$22.00	$4\frac{3}{4}$
No. 7A Cutter, $\frac{5}{8}$ to $1\frac{1}{8}$ "	3.00	$\frac{1}{4}$
No. 7B Cutter, $1\frac{1}{8}$ to $1\frac{3}{4}$ "	3.75	$\frac{3}{8}$
Extra Adjusting Screws	.75	$\frac{1}{4}$
Extra Lock Screws	.60	$\frac{1}{8}$
No. 8 Large, $\frac{7}{8}$ to 3"	26.00	$8\frac{1}{4}$
No. 8A Cutter, $\frac{7}{8}$ to $1\frac{3}{4}$ "	5.25	$\frac{3}{8}$
No. 8B Cutter, $1\frac{3}{4}$ to 3"	6.00	$\frac{1}{2}$
No. 8C Cutter, $2\frac{1}{2}$ to 4"	9.00	$\frac{7}{8}$
Extra Adjusting Screws	.85	$\frac{1}{4}$
Extra Lock Screws	.70	$\frac{1}{4}$



## Greenlee Auger Bits

Unusual care is exercised in the manufacture of all Greenlee Auger Bits, regardless of pattern, to insure strict adherence to adopted specifications for important details. The shank is forged to a true square taper, cutting parts are accurately sized to indicated diameters, twist is ground for clearance and properly polished, and spurs are correctly shaped and proportioned. Finally, cutting edges are filed sharp, the tool tested in wood, and then packed ready for use by the purchaser.

### STANDARD LENGTHS OF AUGER BITS

For ready reference we are giving below the twist and overall dimensions of Auger Bits, Nos. 12, 13, 20, 21, 22, 25, 28 and 39. Overall lengths as given apply to distance from cutting edge to end of shank and do not include screw point.

Size 16ths	Twist	Overall
3	3"	7"
4	$3\frac{3}{8}$ "	$7\frac{1}{2}$ "
5	$3\frac{1}{2}$ "	$7\frac{5}{8}$ "
6	$3\frac{5}{8}$ "	$7\frac{3}{4}$ "
7	$3\frac{3}{4}$ "	$7\frac{7}{8}$ "
8	$3\frac{7}{8}$ "	8"
9	$3\frac{7}{8}$ "	$8\frac{1}{8}$ "
10	4"	$8\frac{1}{4}$ "
11	$4\frac{1}{8}$ "	$8\frac{3}{8}$ "
12	$4\frac{1}{4}$ "	$8\frac{1}{2}$ "
13	$4\frac{3}{8}$ "	$8\frac{5}{8}$ "
14	$4\frac{1}{2}$ "	$8\frac{3}{4}$ "
15	$4\frac{5}{8}$ "	$8\frac{7}{8}$ "
16	$4\frac{3}{4}$ "	9"
17 to 20 inclusive	$4\frac{7}{8}$ "	$9\frac{1}{4}$ "
21 and above	5"	$9\frac{1}{2}$ "

In producing auger bits, the shanking, plating and twisting operations are done between a pair of dies under a Bradley hammer, and it is not possible to exactly follow above specifications. Therefore, slight variations will be found, and some tolerance should be allowed.

Lengths of Dowel Bits, Car Bits and other forms of augers have been given on pages illustrating and listing individual items.





## Tools for the Craftsman



### No. 12 Extension-Lip Auger Bit



Our Greenlee Extension-Lip Auger Bit has earned an enviable reputation for form, temper, and finish. It is fully polished with the exception of the square, which is lacquered green.

Important features of this Extension-Lip Auger Bit enable it to feed positively, bore smoothly, and clear freely. Sizes 1-inch and smaller have double-thread points; larger sizes, single-thread point. A very desirable bit for pattern and cabinet work.

Twist and overall dimensions are outlined on page 11. For set assortments see pages 18 and 19. Standard package, sizes 1 1/4-inch and smaller, 1/2 dozen in a box; larger sizes, 1/4 dozen in a box. Listed sizes in stock.

#### LIST PRICE AND WEIGHT PER DOZEN

*Size in Sixteenths — Weight in Pounds*

Size	Price	Weight	Size	Price	Weight
3	\$6.00	3/4	15	\$ 9.50	4 1/2
4	5.00	1	16	9.50	4 3/4
5	5.00	1 1/4	17	12.00	6
6	5.00	1 1/2	18	12.00	6 1/2
7	5.00	1 3/4	19	14.00	6 3/4
8	5.00	2	20	14.00	7 1/4
9	6.00	2 1/4	22	16.00	7 1/2
10	6.00	2 1/2	24	18.00	8 1/2
11	7.00	3	26	20.00	8 3/4
12	7.00	3 1/2	28	22.00	10
13	8.25	3 3/4	30	24.00	11
14	8.25	4	32	26.00	12

## Tools for the Craftsman



### No. 22 Solid-Center Auger Bit



The Greenlee Solid-Center Auger Bit has a double-cutter head with extension lips, and is fitted with medium-pitch screw point. The twist and round are highly polished, and the square is lacquered green.

The center stem gives added stiffness and the single spiral easily elevates chips, which makes this type of bit desirable for general woodworking requirements.

Twist and overall dimensions given on page 11 with set assortments outlined on pages 18 and 19. Sizes 1 1/4-inch and smaller are regularly packed 1/2 dozen in a box; larger sizes, 1/4 dozen. Listed sizes in stock.

#### LIST PRICE AND WEIGHT PER DOZEN

*Size in Sixteenths — Weight in Pounds*

Size	Price	Weight	Size	Price	Weight
3	\$4.50	3/4	16	\$ 9.00	4 3/4
4	4.00	1	17	10.50	6
5	4.00	1 1/4	18	10.50	6 1/2
6	4.00	1 1/2	19	12.00	6 3/4
7	4.50	1 3/4	20	12.00	7 1/4
8	5.00	2	21	13.50	7 1/2
9	5.50	2 1/4	22	13.50	7 1/2
10	6.00	2 1/2	23	15.00	8 1/4
11	7.00	3	24	15.00	8 1/2
12	7.00	3 1/2	26	17.00	8 3/4
13	8.00	3 3/4	28	19.00	10
14	8.00	4	30	21.00	11
15	9.00	4 1/2	32	23.00	12



Tools for the Craftsman



### No. 13 Unispur Auger Bit



The Unispur Auger Bit is of the double-twist pattern with single-cutter head. The one outlining spur for severing the wood fibers is set well in advance of the chip lifter on the opposite side, permitting smooth boring. This type bores easily and will go entirely through the stock without pressure.

Auger Bits of this style are made to standard specifications, as outlined on page 11. The twist and round are fully polished, and the square is lacquered green. Smaller sizes are fitted with fine-pitch point while the larger have a medium-feed screw point.

This pattern is available in sets as referred to on pages 18 and 19. Standard package, size 1 1/4-inch and smaller, 1/2 dozen in a box; larger sizes, 1/4 dozen. Sizes listed in stock.

#### LIST PRICE AND WEIGHT PER DOZEN

Size in Sixteenths — Weight in Pounds

Size	Price	Weight	Size	Price	Weight
3	\$6.00	3/4	13	\$8.25	3 3/4
4	5.00	1	14	8.25	4
5	5.00	1 1/4	15	9.50	4 1/2
6	5.00	1 1/2	16	9.50	4 3/4
7	5.00	1 3/4	17	12.00	6
8	5.00	2	18	12.00	6 1/2
9	6.00	2 1/4	19	14.00	6 3/4
10	6.00	2 1/2	20	14.00	7 1/4
11	7.00	3	22	16.00	7 1/2
12	7.00	3 1/2	24	18.00	8 1/2

Tools for the Craftsman



### No. 20 Utility Auger Bit

The Greenlee Utility Auger Bit is a high-quality bit made to sell at a lower price than the standard Greenlee Bits. It is not a cheap bit in quality but is a plain, correct, and dependable tool.

The tool is not highly polished like other Greenlee Bits, but has a properly formed square and round, ample for both strength and appearance, with an accurately formed twist and cutting head having well-shaped lips and spurs. The screw point has a clean thread, and the bit is true to size and correctly centered.

For list prices on sets see pages 18 and 19. Standard package, sizes 1 1/4-inch and smaller, 1/2 dozen in box; larger sizes, 1/4 dozen in box. Listed sizes in stock.

#### LIST PRICE AND WEIGHT PER DOZEN

Size in Sixteenths — Weight in Pounds

Size	Price	Weight	Size	Price	Weight
3	\$6.00	3/4	13	\$ 8.25	3 3/4
4	5.00	1	14	8.25	4
5	5.00	1 1/4	15	9.50	4 1/2
6	5.00	1 1/2	16	9.50	4 3/4
7	5.00	1 3/4	17	12.00	6
8	5.00	2	18	12.00	6 1/2
9	6.00	2 1/4	19	14.00	6 3/4
10	6.00	2 1/2	20	14.00	7 1/4
11	7.00	3	22	16.00	7 1/2
12	7.00	3 1/2	24	18.00	8 1/2





*Tools for the Craftsman*



## No. 25 Solid-Center Unispur Auger Bit

The Solid-Center Unispur Auger Bit has cutting parts like our No. 13, in that the head has only one outlining spur and one cutting edge. The solid-center twist is preferred by some users, due to its rigidity and chip-clearing ability.

Tools of this number have standard Auger Bit dimensions as outlined on page 11. Smaller sizes have fine single screw points and the larger are fitted with medium-pitch points. The twist and round are fully polished, while the square is lacquered green.

Auger Bits of this type are available in sets as referred to on pages 18 and 19. Standard package, sizes 1 $\frac{1}{4}$ -inch and smaller,  $\frac{1}{2}$  dozen in box; larger sizes,  $\frac{1}{4}$  dozen in box. Listed sizes are in stock.

### LIST PRICE AND WEIGHT PER DOZEN

*Size in Sixteenths — Weight in Pounds*

Size	Price	Weight	Size	Price	Weight
4	\$5.00	1	13	\$ 8.25	3 $\frac{3}{4}$
5	5.00	1 $\frac{1}{4}$	14	8.25	4
6	5.00	1 $\frac{1}{2}$	15	9.50	4 $\frac{1}{2}$
7	5.00	1 $\frac{3}{4}$	16	9.50	4 $\frac{3}{4}$
8	5.00	2	17	12.00	6
9	6.00	2 $\frac{1}{4}$	18	12.00	6 $\frac{1}{2}$
10	6.00	2 $\frac{1}{2}$	20	14.00	7 $\frac{1}{4}$
11	7.00	3	22	16.00	7 $\frac{1}{2}$
12	7.00	3 $\frac{1}{2}$	24	18.00	8 $\frac{1}{2}$

*Tools for the Craftsman*



## No. 28 Single-Twist Auger Bit



The Single-Twist Auger Bit is a tool which we can offer as a thoroughly satisfactory general-purpose bit. It will bore easily, due to its single-cutter head; smoothly, as the head is of the extension-lip pattern, and it has the strength of the ship auger type of tool.

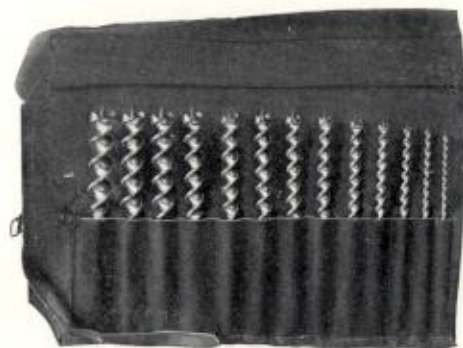
This bit has polished hollows, round, and edges, and the square is lacquered green. The screw point is of medium coarse pitch and bores entirely through stock without pressure.

For list prices on various sets, see pages 18 and 19. Standard package, sizes 1 $\frac{1}{4}$ -inch and smaller,  $\frac{1}{2}$  dozen in box; larger sizes,  $\frac{1}{4}$  dozen in box. Sizes listed are in stock.

### LIST PRICE AND WEIGHT PER DOZEN

*Size in Sixteenths — Weight in Pounds*

Size	Price	Weight	Size	Price	Weight
3	\$6.00	$\frac{3}{4}$	10	\$6.00	2 $\frac{1}{2}$
4	5.00	1	11	7.00	3
5	5.00	1 $\frac{1}{4}$	12	7.00	3 $\frac{1}{2}$
6	5.00	1 $\frac{1}{2}$	13	8.25	3 $\frac{3}{4}$
7	5.00	1 $\frac{3}{4}$	14	8.25	4
8	5.00	2	15	9.50	4 $\frac{1}{2}$
9	6.00	2 $\frac{1}{4}$	16	9.50	4 $\frac{3}{4}$



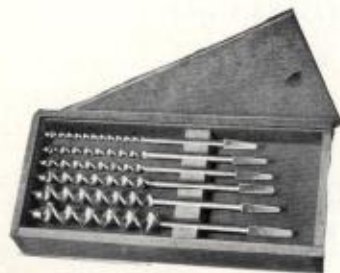
## Fancy Auger Bit Set Packages

The Handy Box with a separate compartment for each Auger Bit, and the Leatherette Roll illustrated above are available for sets of 6, 8, 9 and 13. The Handy Box is made of hardwood, nicely finished, and is fitted with brass plated hardware. Leatherette Roll is flannel lined.

### LIST PRICE AND WEIGHT EACH

*Weight in Pounds*

Handy Box for	Price	Weight	Leatherette Roll for	Price	Weight
6	\$ .85	1 1/2	6	\$.60	1/4
8	.95	1 3/4	8	.65	1/4
9	1.00	1 3/4	9	.65	1/4
13	1.10	2 1/4	13	.75	3/8



An attractive low-priced set package is available in the Slide Cover Box illustrated to the left. It is sanded and finished and is fitted with an inside wood separator to keep tools in place. It is stocked for sets of 6 Auger Bits only. List price each, \$.25. Shipping weight each, 1/2 pound.



## Auger Bit Assortments

### LIST PRICE AND WEIGHT EACH

*Weight in Pounds*

Quarters	Quantity and Sizes	Standard	Solid-Center	Weight
11 1/4	6 Bits from 1/4 to 3/4-inch One 4-5-6-8-10-12	\$3.00	\$2.60	1
14	6 Bits from 1/4 to 1-inch One 4-6-8-10-12-16	3.35	3.00	1 1/4
18 3/4	8 Bits from 1/4 to 1-inch One 4-5-6-8-10-12-14-16	4.50	4.00	1 3/4
20 1/2	9 Bits from 1/4 to 1-inch One 4-5-6-7-8-10-12-14-16	4.90	4.30	1 3/4
32 1/2	13 Bits from 1/4 to 1-inch One 4-5-6-7-8-9-10-11-12-13-14-15-16	7.50	6.75	2 3/4

The Standard List, as outlined above, applies to Auger Bits of the following numbers: 12, 13, 20, 25 and 28. The Solid-Center List applies to sets of Nos. 22 Greenlee and 22-B Jaxon brand tools. These list prices cover the Auger Bits only, packed in a common wood or paper box. If fancy set packages are desired, see opposite page for list prices.

Some buyers prefer to use symbol numbers in ordering and recording Auger Bit sets. Prefix letter "R" denotes an assortment of 6, 11 1/4 quarters; letter "U" a set of 6, 14 quarters; letter "V" a set of 8, 18 3/4 quarters; letter "W" a set of 9, 20 1/2 quarters and letter "Z" a set of 13, 32 1/2 quarters. The prefix letter should be followed by the catalog number of Auger Bit desired, then suffix letter "H" for Handy Boxes, letter "M" for Leatherette Rolls and letter "L" for the Slide Cover Boxes. For example, symbol Z-22-H would designate a set of 32 1/2 quarters No. 22 Solid-Center Auger Bits packed in a Handy Box.

Special assortments of Auger Bits can be furnished, and prices will be quoted on application.





*Tools for the Craftsman*



### No. 39 Ship Auger Bit



Our No. 39 Greenlee Ship Auger Bit is fitted with a medium coarse screw point, has single-cutter head with side lip and without spur. This bit has one chip channel, leaving a heavy section of twist, which gives great strength and stiffness. The tool is highly polished with the exception of the square, which is dipped in green lacquer.

Although this type of bit does not bore as smoothly as one with spurs, it feeds freely and will bore through without pressure in all kinds of wood. It is widely used in construction work and is also recommended for use in the tropical hardwoods.

It is made to standard auger bit twist and overall lengths as given on page 11. Standard package, 1/2 dozen in a box. Listed sizes are in stock.

#### LIST PRICE AND WEIGHT PER DOZEN

*Size in Sixteenths — Weight in Pounds*

Size	Price	Weight	Size	Price	Weight
4	\$6.00	1	12	\$ 9.00	4
5	6.00	1 1/4	13	10.50	5
6	6.00	1 1/2	14	10.50	5 1/2
7	6.00	1 3/4	15	12.00	6 1/4
8	6.00	2	16	12.00	6 1/2
9	7.50	2 3/4	17	13.50	8 1/4
10	7.50	3 1/4	18	13.50	8 1/2
11	9.00	3 3/4	20	15.00	9

*Tools for the Craftsman*



### No. 46 Wood Boring Brace Drill

This Greenlee Brace Drill is designed especially for boring wood, although the head would not be destroyed should the tool encounter metal in boring. The cutting parts of the taper-head pattern are easily kept in good condition. All of the Drill, except the square shank, is polished and left bright. Length of twist varies from 2 1/4 to 4 inches, and over-all length from 4 1/2 to 8 inches.

The body of metal in the twist or flute is amply heavy to give strength, but yet not interfere with chip clearance. The edges of the twist are relieved by grinding to secure the minimum friction with the wood.

Standard package, 1/2 dozen in box. Sizes listed carried in stock.

#### LIST PRICE AND WEIGHT PER DOZEN

*Size in Thirty-seconds — Weight in Pounds*

Size	Price	Weight	Size	Price	Weight
3	\$3.25	3/8	13	\$ 7.50	2
4	3.25	1/2	14	8.00	2 1/8
5	3.50	3/4	15	8.75	2 1/2
6	4.00	3/4	16	9.50	2 3/8
7	4.50	3/4	17	10.25	2 3/4
8	5.00	7/8	18	11.00	3
9	5.50	1	20	12.50	3 1/2
10	6.00	1 1/4	22	14.50	4
11	6.50	1 1/2	24	16.50	4 1/2
12	7.00	1 3/4			



### No. 42 Solid-Center Dowel Auger Bit

Our No. 42 Solid-Center Dowel Auger Bit has the Extension-Lip type of cutting head. This bit is made with a twist length of  $2\frac{1}{4}$  inches, round and square  $2\frac{3}{4}$  inches long or a complete length of 5 inches.

This tool is similar to the dowel bit shown on opposite page, except that it has the solid-center pattern of twist, which gives added stiffness and strength. The Dowel Auger Bit is the shortest brace tool carried in stock, and it can be used when boring holes in close quarters.

The hollow, round and edges of this bit are highly finished, and the square is lacquered green.

Standard package,  $\frac{1}{2}$  dozen in box. Listed sizes carried in stock.

#### LIST PRICE AND WEIGHT PER DOZEN

*Size in Sixteenths — Weight in Pounds*

Size	Price	Weight	Size	Price	Weight
3	\$4.50	$\frac{1}{2}$	10	\$6.00	$1\frac{5}{8}$
4	4.00	$\frac{3}{4}$	11	7.00	$1\frac{3}{4}$
5	4.00	1	12	7.00	2
6	4.00	$1\frac{1}{8}$	13	8.00	$2\frac{1}{8}$
7	4.50	$1\frac{1}{4}$	14	8.00	$2\frac{1}{4}$
8	5.00	$1\frac{3}{8}$	15	9.00	$2\frac{3}{8}$
9	5.50	$1\frac{1}{2}$	16	9.00	$2\frac{1}{2}$



### No. 43 Dowel Auger Bit

Like the Solid-Center Dowel Auger Bit, this tool is furnished in the Extension-Lip pattern. It has an overall length of 5 inches,  $2\frac{1}{4}$  inches of twist, and  $2\frac{3}{4}$  inches of round and square.

The twist, round and edges are fully polished, and the square is dipped in green lacquer. The head is accurately sized and is fitted with a fine double screw point for boring smooth holes.

In Manual Training Schools, and especially where the younger boys are taught, this Dowel Auger Bit is very suitable for general use and has become most popular wherever introduced.

Standard package,  $\frac{1}{2}$  dozen in box. Listed sizes in stock.

#### LIST PRICE AND WEIGHT PER DOZEN

*Size in Sixteenths — Weight in Pounds*

Size	Price	Weight	Size	Price	Weight
3	\$6.00	$\frac{1}{2}$	10	\$6.00	$1\frac{5}{8}$
4	5.00	$\frac{3}{4}$	11	7.00	$1\frac{3}{4}$
5	5.00	1	12	7.00	2
6	5.00	$1\frac{1}{8}$	13	8.25	$2\frac{1}{8}$
7	5.00	$1\frac{1}{4}$	14	8.25	$2\frac{1}{4}$
8	5.00	$1\frac{3}{8}$	15	9.50	$2\frac{3}{8}$
9	6.00	$1\frac{1}{2}$	16	9.50	$2\frac{1}{2}$





## No. 53 Solid-Center Car Bit

8-inch Twist — 12-inch Overall

This length of Car Bit takes our No. 53, and it has the same type of twist and cutting parts as our No. 22 Solid-Center Auger Bit. The head has two spurs and double cutting edges of the extension-lip pattern.

This bit is fitted with a medium coarse screw point for general-purpose boring. The hollows, edges and round are highly polished, and the square is lacquered green. If car bits of greater length are desired, refer to page 26 illustrating our No. 56, which has the same type of twist and head.

Standard package,  $\frac{1}{2}$  dozen in a box. Listed sizes in stock.

### LIST PRICE AND WEIGHT PER DOZEN

*Size in Sixteenths — Weight in Pounds*

Size	Price	Weight	Size	Price	Weight
4	\$8.25	1 $\frac{3}{4}$	12	\$11.50	4 $\frac{3}{4}$
5	8.25	2	13	13.50	5
6	8.25	2 $\frac{1}{4}$	14	13.50	5 $\frac{1}{2}$
7	8.25	2 $\frac{1}{2}$	15	15.00	6 $\frac{1}{2}$
8	8.25	3	16	15.00	7
9	10.00	3 $\frac{1}{2}$	17	16.50	8
10	10.00	3 $\frac{3}{4}$	18	16.50	9
11	11.50	4 $\frac{1}{4}$			



## No. 55 Extension-Lip Car Bit

To provide a car bit with the smooth-boring qualities so generally demanded in the auger bit, we offer the Greenlee Extension-Lip Car Bit. This bit will bore smoothly, cut freely and feed in with a minimum amount of pressure, due to its correctly formed and finished head.

The point is of medium size with a clean, deep thread. The twist is 12 inches with an overall length of 17 to 18 inches. The spurs and cutting edges are carefully formed and proportioned. With the exception of the square portion of the shank, which is lacquered green, the tool is highly polished.

Standard package,  $\frac{1}{2}$  dozen in box. Listed sizes carried in stock.

### LIST PRICE AND WEIGHT PER DOZEN

*Size in Sixteenths — Weight in Pounds*

Size	Price	Weight	Size	Price	Weight
4	\$11.25	1 $\frac{3}{4}$	13	\$17.50	7 $\frac{1}{2}$
5	11.25	2 $\frac{3}{4}$	14	19.00	9 $\frac{1}{4}$
6	11.25	3	15	20.50	9 $\frac{1}{2}$
7	11.25	3 $\frac{1}{4}$	16	22.00	10 $\frac{1}{2}$
8	11.25	3 $\frac{3}{4}$	17	24.00	12
9	12.50	5	18	26.00	12 $\frac{1}{4}$
10	13.75	5 $\frac{1}{4}$	19	28.00	13
11	15.00	6	20	30.00	14
12	16.25	6 $\frac{3}{4}$			



*Tools for the Craftsman*



### No. 56 Solid-Center Car Bit

The Greenlee No. 56 Solid Center Car Bit has a twist 12 inches long and an overall length of 17 to 18 inches. The head is of the extension-lip pattern, similar to our No. 22 Solid-Center Auger Bit, and is fitted with a medium coarse screw point. The tool is completely polished with the exception of the square, which is lacquered green.

We recommend this tool to the craftsman who requires a bit of greater range than the ordinary length of auger bit. The single spiral and the center stem give a broad channel for clearance and elevation of chips, making this bit a very desirable tool for general wood work.

Standard package,  $\frac{1}{2}$  dozen in a box. List sizes in stock.

#### LIST PRICES AND WEIGHT PER DOZEN

*Size in Sixteenths — Weight in Pounds*

Size	Price	Weight	Size	Price	Weight
4	\$ 9.00	2	13	\$17.50	7 $\frac{1}{2}$
5	9.00	2 $\frac{1}{2}$	14	19.00	8 $\frac{1}{2}$
6	9.00	2 $\frac{3}{4}$	15	20.50	9
7	10.00	3 $\frac{1}{4}$	16	22.00	9 $\frac{1}{2}$
8	11.25	4	17	24.00	11
9	12.50	5	18	26.00	12
10	13.75	5 $\frac{1}{2}$	19	28.00	13
11	15.00	6	20	30.00	14 $\frac{1}{2}$
12	16.25	6 $\frac{1}{2}$			

*Tools for the Craftsman*



### No. 58 Solid-Center Ship Auger Car Bit

Our Greenlee Solid-Center Ship Auger Car Bit measures 17 to 18 inches overall and has a twist length of 12 inches. It is regularly furnished with edges, stem and round fully polished, while the square is dipped in green lacquer.

The head of this bit is made of a single cutter with a side lip, but without spur. This permits very easy cutting and allows a good body of metal for sharpening and wear. This type is very popular in car shop work where smooth holes are not required.

Standard package,  $\frac{1}{2}$  dozen in a box. Listed sizes in stock.

#### LIST PRICE AND WEIGHT PER DOZEN

*Size in Sixteenths — Weight in Pounds*

Size	Price	Weight	Size	Price	Weight
4	\$9.00	2	13	\$17.50	7 $\frac{1}{2}$
5	9.00	2 $\frac{1}{2}$	14	19.00	8 $\frac{1}{2}$
6	9.00	2 $\frac{3}{4}$	15	20.50	9
7	10.00	3 $\frac{1}{4}$	16	22.00	9 $\frac{1}{2}$
8	11.25	4	17	24.00	11
9	12.50	5	18	26.00	12
10	13.75	5 $\frac{1}{2}$	19	28.00	13
11	15.00	6	20	30.00	14 $\frac{1}{2}$
12	16.25	6 $\frac{1}{2}$			





Tools for the Craftsman



## No. 57 Single-Spur Car Bit



This new style of Car bit has just been added to our line and has been especially designed for pole, bridge, dock and other wood construction. It is made from a very tough alloy material and, beyond this, the entire tool is heat-treated for additional strength. The head is of the single-cutter type with one outlining spur, which permits smooth boring and insures long life. The bit can be used as a ship auger after the outlining spur is worn or filed away.

To provide the best of chip clearance, the single-spiral twist is employed, and the tools in all sizes and lengths are highly polished with the exception of the shanks, which are lacquered green. Tools are regularly packed 1/2 dozen in a box, and sizes and lengths listed on opposite page are carried in stock.



## No. 65 Single-Spur Ship Auger

Many requirements of wood construction call for an auger with square-tanged shank, either for use with a handle or for welding purposes. The No. 65 Single-Spur Ship Auger is offered for needs of this kind, and this tool has the same characteristics as given above for the No. 57 Single Spur Car Bit. The round shaft of this ship auger is made 1/2 inch diameter, permitting the use of this tool in power-driven machines by merely cutting off the tanged shank. Standard packing is 1/2 dozen in a box, and all sizes listed on opposite page are stocked.

Tools for the Craftsman



## No. 57 Single-Spur Car Bit No. 65 Single-Spur Ship Auger

LIST PRICE AND WEIGHT PER DOZEN

*Weight in Pounds*

Size	Price	Weight
7/16 x 12-inch twist	\$17.00	6 3/4
8/16	17.00	7 1/2
9/16	19.00	8 5/8
10/16	21.00	9 3/8
11/16	23.00	10 1/2
12/16	25.00	11 3/4
13/16	27.00	12
14/16	29.00	13 1/2
15/16	31.00	15
16/16	33.00	16
17/16	35.00	17 1/2
9/16 x 18-inch twist	26.25	10 3/8
10/16	29.00	12
11/16	31.75	13 1/2
12/16	34.50	15 3/8
13/16	37.25	16 1/2
14/16	40.00	19 1/4
15/16	42.75	22
16/16	45.50	22 1/2
17/16	48.25	25 1/2
9/16 x 24-inch twist	33.50	12 3/8
10/16	36.75	14 1/4
11/16	40.25	16 1/2
12/16	43.50	18 3/4
13/16	46.75	20 1/4
14/16	50.00	24 3/8
15/16	53.50	24 3/4
16/16	57.00	29
17/16	60.50	33 1/2

Tools with 12-inch twist are 17 to 18 inches overall; with 18-inch twist, 23 to 24 inches overall; and with 24-inch twist, 29 to 30 inches overall. Prices on special sizes and lengths quoted on application.



## Tools for the Craftsman



### Eight-Inch Ship Auger Car Bit

No. 62, Polished Twist

No. 62-J, Japanned Twist

The Greenlee No. 62 Ship Auger Car Bit shown above has 8-inch twist and is 12 inches overall. This bit has a single chip channel with a heavy section of twist, which gives it strength and rigidity. It is a free and easy cutting tool and is used largely in the wood construction field.

Those regularly furnished have medium coarse screw points, which are found suitable in nearly all cases. The twists and the round portion of the shanks are polished, while the screw points and heads are bright.

As No. 62-J we furnish bits with the hollow of the twist japanned.

Standard package,  $\frac{1}{2}$  dozen in a box. Listed sizes carried in stock.

#### LIST PRICE AND WEIGHT PER DOZEN

*Size in Sixteenths — Weight in Pounds*

Size	Price	Weight	Size	Price	Weight
4	\$10.00	1 $\frac{1}{2}$	12	\$11.00	7 $\frac{1}{4}$
5	10.00	1 $\frac{3}{4}$	13	12.00	8 $\frac{1}{4}$
6	10.00	2 $\frac{1}{2}$	14	12.00	9 $\frac{1}{4}$
7	10.00	2 $\frac{3}{4}$	15	13.50	10
8	10.00	3 $\frac{1}{4}$	16	13.50	11 $\frac{1}{4}$
9	10.00	4 $\frac{1}{4}$	17	15.00	11 $\frac{1}{2}$
10	10.00	5 $\frac{1}{2}$	18	15.00	14 $\frac{1}{4}$
11	11.00	5 $\frac{3}{4}$	20	16.50	14 $\frac{1}{2}$

## Tools for the Craftsman



### Twelve-Inch Ship Auger Car Bit

No. 64, Polished Twist

No. 64-J, Japanned Twist

The Greenlee Ship Auger Car Bit is made with 12-inch twist and measures about 17 to 18 inches overall. It is recommended for its strength, rigidity, easy cutting and free clearance.

In the regular finish, the twist, round and screw are fully polished, and stock is available in sizes up to and including the 24/16 inch. We also offer a Ship Auger Car Bit with japanned hollows, known as No. 64-J, which is carried in stock in all sizes as listed.

Ship Auger Car Bits with twist longer than 12-inch are made to order and sold from the list for Extra Length Ship Augers, see pages 34 and 35.

Standard package,  $\frac{1}{2}$  dozen in a box.

#### LIST PRICE AND WEIGHT PER DOZEN

*Size in Sixteenths — Weight in Pounds*

Size	Price	Weight	Size	Price	Weight
4	\$11.00	2	16	\$14.50	16 $\frac{1}{2}$
5	11.00	2 $\frac{1}{2}$	17	16.00	17 $\frac{1}{2}$
6	11.00	3 $\frac{1}{2}$	18	16.00	19 $\frac{1}{2}$
7	11.00	3 $\frac{3}{4}$	19	18.00	20 $\frac{3}{4}$
8	11.00	4 $\frac{1}{2}$	20	18.00	21 $\frac{1}{2}$
9	11.00	6	21	20.00	22 $\frac{1}{4}$
10	11.00	6 $\frac{1}{2}$	22	20.00	23
11	12.00	6 $\frac{3}{4}$	24	23.00	31
12	12.00	9 $\frac{1}{4}$	26	27.00	33
13	13.00	10 $\frac{1}{2}$	28	32.00	35
14	13.00	12 $\frac{3}{4}$	30	38.00	42
15	14.50	14 $\frac{1}{2}$	32	45.00	48





## Tools for the Craftsman



### Ship Auger with Screw

No. 66, Polished Twist

No. 66-J, Japanned Twist

Ship Augers have twists which vary in length according to sizes, as follows: 4/16 and 5/16, 8-inch twist; 6/16, 7/16 and 8/16, 10-inch twist; 9/16 to 1-inch, 12-inch twist; larger sizes, 15-inch twist. The overall length exceeds the twist length by about 5 inches.

No. 66 denotes a fully polished tool, which is carried in stock sizes 24/16-inch and smaller. Ship Augers with japanned hollows, our No. 66-J, can be furnished from stock, sizes 1/4-inch to 2-inch, larger sizes being special.

Extra-length Ship Augers can be supplied promptly to order. See pages 34 and 35 for list and price data.

#### LIST PRICE AND WEIGHT PER DOZEN

Size in Sixteenths — Weight in Pounds

Size	Price	Weight	Size	Price	Weight
4	\$11.00	13/4	22	\$20.00	34
5	11.00	21/4	23	23.00	36 1/2
6	11.00	3 1/2	24	23.00	39
7	11.00	4	25	27.00	43
8	11.00	4 3/4	26	27.00	44
9	11.00	6 1/2	27	32.00	45
10	11.00	7 1/2	28	32.00	47
11	12.00	8 1/2	29	38.00	49
12	12.00	9 1/2	30	38.00	51
13	13.00	11 1/2	31	45.00	52
14	13.00	13 3/4	32	45.00	54
15	14.50	14 1/2	34	57.00	60
16	14.50	17 1/2	36	72.00	66
17	16.00	22 1/2	38	86.00	72
18	16.00	25	40	101.00	82
19	18.00	26 3/4	42	115.00	88
20	18.00	28	44	130.00	94
21	20.00	31	48	158.00	105

Sizes 25/16-inch and larger are classified as Extra-Large Ship Augers.

## Tools for the Craftsman



### Ship Auger without Screw

No. 68, Polished Twist

No. 68-J, Japanned Twist

No-point Ship Augers have twists which vary in length according to sizes, as follows: 4/16 and 5/16, 8-inch twist; 6/16, 7/16 and 8/16, 10-inch twist; 9/16 to 1-inch, 12-inch twist; larger sizes, 15-inch twist. The overall length exceeds the twist length by about 5 inches.

No. 68 denotes a fully polished tool, which is carried in stock sizes 24/16-inch and smaller. Japanned twist is designated by our No. 68-J and can be furnished from stock sizes 1/4-inch to 2-inch, larger sizes being special.

Extra-length Ship Augers without screw can be supplied promptly to order. See pages 34 and 35 for list and price data.

#### LIST PRICE AND WEIGHT PER DOZEN

Size in Sixteenths — Weight in Pounds

Size	Price	Weight	Size	Price	Weight
4	\$13.20	13/4	22	\$24.00	34
5	13.20	21/4	23	27.60	36 1/2
6	13.20	3 1/2	24	27.60	39
7	13.20	4	25	32.40	43
8	13.20	4 3/4	26	32.40	44
9	13.20	6 1/2	27	38.40	45
10	13.20	7 1/2	28	38.40	47
11	14.40	8 1/2	29	45.60	49
12	14.40	9 1/2	30	45.60	51
13	15.60	11 1/2	31	54.00	52
14	15.60	13 3/4	32	54.00	54
15	17.40	14 1/2	34	68.40	60
16	17.40	17 1/2	36	86.40	66
17	19.20	22 1/2	38	103.20	72
18	19.20	25	40	121.20	82
19	21.60	26 3/4	42	138.00	88
20	21.60	28	44	156.00	94
21	24.00	31	48	189.60	105

Sizes 25/16-inch and larger are classified as Extra-Large Ship Augers.

List of No. 66X Extra-Length Ship Augers  
with Screw

Price Per Dozen — Size in Sixteenths

Size	18-inch Twist	20-inch Twist	22-inch Twist	24-inch Twist	Each Extra 6" Twist
8	\$ 15.00	\$ 18.00	\$ 21.00		
9	16.50	19.80	23.10		
10	18.00	21.30	24.60	\$ 27.90	
11	19.50	23.10	26.70	30.30	
12	21.00	24.60	28.20	31.80	\$ 10.80
13	22.80	26.70	30.60	34.50	11.70
14	24.60	28.50	32.40	36.30	11.70
15	26.40	30.60	34.80	39.00	12.60
16	28.20	32.40	36.60	40.80	12.60
17	30.00	34.50	39.00	43.50	13.50
18	31.80	36.30	40.80	45.30	13.50
19	33.60	38.40	43.20	48.00	14.40
20	35.40	40.20	45.00	49.80	14.40
21	37.80	42.90	48.00	53.10	15.30
22	40.20	45.30	50.40	55.50	15.30
23	42.60	48.00	53.40	58.80	16.20
24	45.00	50.40	55.80	61.20	16.20
25	48.00	54.00	60.00	66.00	18.00
26	51.00	57.00	63.00	69.00	18.00
27	54.00	60.60	67.20	73.80	19.80
28	57.00	63.60	70.20	76.80	19.80
29	60.00	67.20	74.40	81.60	21.60
30	63.00	70.20	77.40	84.60	21.60
31	66.00	73.80	81.60	89.40	23.40
32	69.00	76.80	84.60	92.40	23.40
33	84.00	92.40	100.80	109.20	25.20
34	84.00	92.40	100.80	109.20	25.20
35	93.00	102.30	111.60	120.90	27.90
36	102.00	112.20	122.40	132.60	30.60



## No. 66X Extra-Length Ship Augers with Screw

Extra-length Ship Augers are regularly made with japanned hollows, unless ordered otherwise, length overall about six inches in excess of twist length. If longer shanks than regular are desired, overall dimension should be clearly specified in ordering. For Ship Augers with shanks longer than regular, but not over 18 inches, add \$7.50 per dozen to regular list.

The list may be extended for any length of twist by adding the increment shown in the last column. To obtain the list for larger sizes than shown, add \$9.00 per dozen for each extra 16th of diameter over 36/16 in 18-inch twist. For longer twist of these larger sizes add 10% of the 18-inch twist for each extra 2 inches of twist.

Extra-length Ship Augers are not carried in stock, and list prices as given apply only on quantities of two dozen or more. Smaller lots cost more to manufacture, and the following schedule of quantity extras must be used:

1 of a size .....	List plus 200%
2 of a size .....	List plus 150%
3 of a size .....	List plus 100%
4 or 5 of a size .....	List plus 66-2/3%
6 to 11 of a size .....	List plus 33-1/3%
12 to 23 of a size .....	List plus 10%

List prices on opposite page, and conditions noted above, also apply on special extra-length hand boring tools.

No. 68X Extra-Length Ship Augers  
Without Screw

These Ship Augers are sold from list, as given on opposite page, advanced 20%. Stock is not carried of extra-length Ship Augers without screw, and for quantities of less than one dozen, above extras must be applied.





*Tools for the Craftsman*



### No. 84 Boring Machine Auger

This Greenlee Boring Machine Auger, No. 84, is of the double-twist type with a flat-cut head fitted with a medium coarse screw point. The 1/2-inch round shank has pinhole and recess and will fit all makes of standard hand boring machines.

The tool is made with a 7 1/2-inch twist, and an 11-inch overall length. Sizes 1 1/2-inch and smaller supplied with fully polished twist, and larger sizes have japanned hollows.

Standard package sizes, 1 1/2-inch and smaller, 1/2 dozen in a box; larger sizes, 1/4 dozen in a box. Sizes as listed carried in stock. Tools of larger diameters or longer lengths are made to order, and prices quoted on application.

#### LIST PRICE AND WEIGHT PER DOZEN

*Weight in Pounds*

Size	Price	Weight	Size	Price	Weight
3/8"	\$10.00	3 1/2	1 1/8"	\$17.00	9 3/4
1/2"	10.00	4 1/2	1 1/4"	19.00	10 1/2
5/8"	10.00	5 1/2	1 3/8"	21.00	12
3/4"	11.00	6 3/4	1 1/2"	24.00	13 1/2
7/8"	13.00	7 1/4	1 3/4"	28.00	14
1"	15.00	9	2"	32.00	18 1/4

*Tools for the Craftsman*



### No. 88 Nut Auger

Our No. 88 Greenlee Nut Auger is of the double-twist pattern, flat-cut head, and is fitted with a medium coarse screw point. Sizes 1 1/2-inch and smaller have fully polished twist, while on larger sizes, hollows are japanned.

These Augers have a twist length varying from 6-inch on the smallest to 9 1/2-inch on the 3 1/2-inch and larger sizes. In the same way the overall length varies from 14 to 20 inches. Threaded end is fitted with a semi-finished hexagon nut.

Regularly packed 1/2 dozen in a box, sizes 1 1/2-inch and smaller; 1 3/4 and 2-inch, 1/4 dozen in box; larger sizes one-sixth dozen in a box. Listed sizes in stock.

#### LIST PRICE AND WEIGHT PER DOZEN

*Weight in Pounds*

Size	Price	Weight	Size	Price	Weight
3/8"	\$10.00	3 3/4	1 1/8"	\$17.00	8 3/4
1/2"	10.00	4 3/4	1 1/4"	19.00	10 1/2
5/8"	10.00	5	1 3/8"	21.00	13
3/4"	11.00	6	1 1/2"	24.00	15
7/8"	13.00	6 3/4	1 3/4"	28.00	21
1"	15.00	7 1/2	2"	32.00	23

#### EXTRA LARGE SIZES

Size	Price	Weight	Size	Price	Weight
2 1/4"	\$42.00	33	3"	\$ 92.00	53
2 1/2"	52.00	37	3 1/2"	152.00	68
2 3/4"	72.00	46	4"	212.00	87



## Tools for the Craftsman



### No. 92 Solid-Center Derrick Auger

Our No. 92 Derrick Auger has a twist of the solid-center type, 18 inches long, with double-cutter head of the flat-cut pattern. The square is made about 12 inches long with the end threaded and fitted with a nut. Overall length is 36 inches, including 6 inches of round. The twist, stem, and round on sizes 1½-inch and smaller are highly polished, and the square section is forge black. Larger sizes have japanned hollows. Standard packing, bundles of ¼ or ½ dozen. Sizes listed in stock.

#### LIST PRICE AND WEIGHT PER DOZEN

Weight in Pounds					
Size	Price	Weight	Size	Price	Weight
½"	\$22.50	11	1½"	\$39.30	28
¾"	25.50	15	1¾"	42.90	33
¾"	28.50	18	1½"	52.50	37
7/8"	32.10	21	1¾"	64.50	44
1"	35.70	22	2"	76.50	56

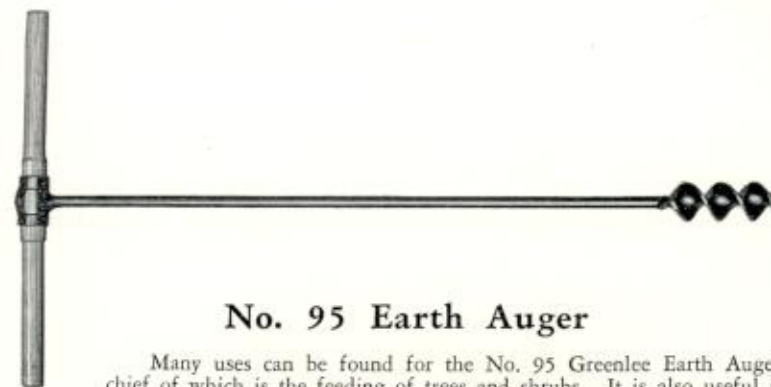
### No. 92X Solid-Center Derrick Auger

Frequently Derrick Augers with longer twist length are required, and to take care of this need we carry our No. 92-X with 24-inch twist, 6-inch round and 6-inch square section with 36-inch overall dimension. Listed sizes in stock.

#### LIST PRICE AND WEIGHT PER DOZEN

Weight in Pounds					
Size	Price	Weight	Size	Price	Weight
5/8"	\$32.00	13½	1¼"	\$51.90	38
¾"	35.50	15	1½"	62.20	42
7/8"	39.60	20			
1"	43.70	24	1¾"	76.25	52
1½"	47.80	31	2"	90.30	70

## Tools for the Craftsman



### No. 95 Earth Auger

Many uses can be found for the No. 95 Greenlee Earth Auger, chief of which is the feeding of trees and shrubs. It is also useful in boring fence post holes in hard soil, tunneling under ground for pipe, and for testing conditions of subsoil. It is 2 inches in diameter, 6-inch twist, overall length of 40 inches and is supplied with a hardwood handle.

#### LIST PRICE AND WEIGHT EACH

Weight in Pounds		
Size	Price	Weight
2"	\$3.50	6



### No. 81 Steam Fitters' Auger

This type of tool is made for use with a wrench, in that the end of the shank is milled to 31/64-inch square. The head is of the flat-cut pattern, and the twist on each size is 4½ inches in length. The extra-long point for firmly engaging the wood has a fast double-pitch thread. Standard packing is ½ dozen. Listed sizes in stock.

#### LIST PRICE AND WEIGHT PER DOZEN

Weight in Pounds					
Size	Price	Weight	Size	Price	Weight
1"	\$20.40	6¾	1¾"	\$36.00	12
1¼"	25.20	9	2"	42.00	14½
1½"	30.00	10½	2½"	56.40	21





## No. 96 Ring Auger

Our No. 96 Ring Auger is of the double-twist type and has a flat-cut head with heavy side lips for long service. This auger is fitted with a good sized screw point, having coarse threads, cleanly and deeply cut, which in connection with sharply pitched cutting edges, enable it to feed easily.

The twist length varies from 6-inch on the smallest sizes to 8-inch on the largest. In the same way, the overall dimension varies from 20 to 26 inches. Sizes 1½-inch and smaller have polished twist, while larger sizes have japanned hollows.

Listed sizes carried in stock. For augers over 2-inch in diameter, refer to our 97 on opposite page.

### LIST PRICE AND WEIGHT PER DOZEN

*Weight in Pounds*

Size	Price	Weight	Size	Price	Weight
3/8"	\$13.50	6½	1"	\$17.25	18
1/2"	13.50	8½	1¼"	21.00	31
5/8"	13.50	9¾	1½"	26.00	34
3/4"	14.75	13½	1¾"	30.00	39
7/8"	16.00	13¾	2"	34.00	41



## No. 97 Rafting Auger

The No. 97 Greenlee Rafting Auger is of the double-twist type, with head of the flat-cut pattern. It is fitted with a large screw point of medium pitch. All sizes are made with 12-inch twist, about 15 inches of round, and an overall length of 30 inches.

Sizes 1¼-inch and 1½-inch have polished twist and edges, and one-half the round is finished. Augers 1¾-inch and larger have japanned twist. They are fitted with rings in proportion to size of auger.

We do not box Rafting Augers, but pack 2-inch and smaller sizes ¼ dozen in a bundle, larger sizes one-sixth dozen bundled. Sizes listed carried in stock.

### LIST PRICE AND WEIGHT PER DOZEN

*Weight in Pounds*

Size	Price	Weight	Size	Price	Weight
1¼"	\$32.00	38	2½"	\$ 76.00	66
1½"	40.00	45	2¾"	90.00	68
1¾"	48.00	50	3"	105.00	78
2"	56.00	54	3½"	180.00	125
2¼"	66.00	58	4"	240.00	129



## Tools for the Craftsman



NO. 703 ROSE COUNTERSINK



NO. 702 "S" COUNTERSINK

Both the above Brace Countersinks are made  $4\frac{1}{4}$  inches overall. The No. 702 "S" pattern, for wood only, will countersink up to  $\frac{3}{4}$ -inch, and the No. 703 Rose pattern, for wood and soft metals, will countersink up to  $\frac{1}{2}$ -inch. Standard package, one dozen.

### LIST PRICE AND WEIGHT PER DOZEN

Weight in Pounds

	Price	Weight
No. 702	\$3.00	$1\frac{1}{4}$
No. 703	2.75	$1\frac{1}{4}$



NO. 711 SQUARE REAMER

Reamers of this number in sizes listed below have a small diameter of  $\frac{1}{8}$  inch and are 5, 6 and 8 inches overall. Standard package one dozen.

### LIST PRICE AND WEIGHT PER DOZEN

Weight in Pounds

Size	Price	Weight
$\frac{3}{8}$ "	\$2.25	$1\frac{1}{4}$
$\frac{1}{2}$ "	2.50	$1\frac{1}{2}$
$\frac{3}{4}$ "	5.00	$3\frac{1}{2}$



NO. 723 SCREW DRIVER BIT

Four sizes of No. 723 Screw Driver Bits are available as listed, the overall lengths ranging from  $4\frac{1}{2}$  to  $5\frac{1}{2}$  inches. The high-grade material and heat-treatment used insure best of service under severe conditions. Standard package, one dozen.

### LIST PRICE AND WEIGHT PER DOZEN

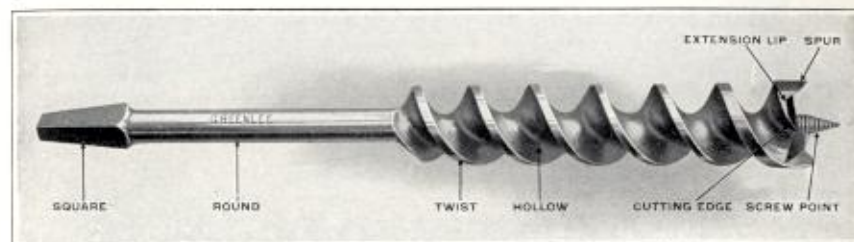
Weight in Pounds

Size	Price	Weight	Size	Price	Weight
$\frac{1}{4}$ "	\$1.50	$\frac{3}{4}$	$\frac{1}{2}$ "	\$1.80	$1\frac{3}{4}$
$\frac{5}{8}$ "	1.50	1			
$\frac{3}{8}$ "	1.60	$1\frac{1}{2}$	Assorted	1.60	$1\frac{1}{2}$

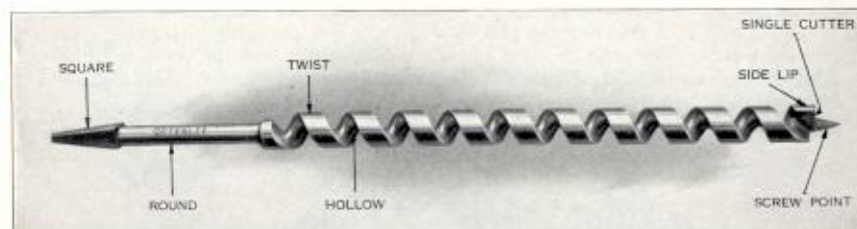
## Tools for the Craftsman



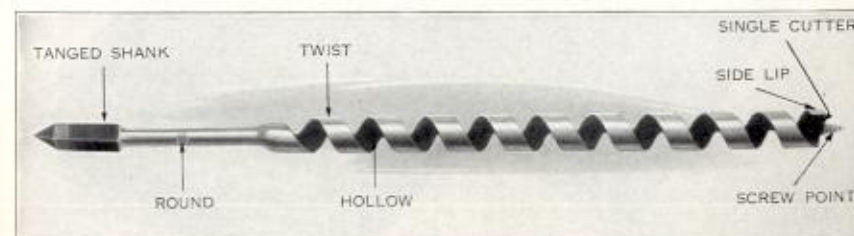
### Parts of Bits



EXTENSION-LIP AUGER BIT



SHIP AUGER CAR BIT



SHIP AUGER





## Greenlee Chisels and Gouges

Greenlee Chisels, Gouges and Draw Knives are produced by workmen who have had years of experience in the manufacture of fine tools in a plant where quality is the watchword from the purchase of materials on through the processes of forming, heat-treating, finishing and packaging.

The blades of these tools are made from a crucible steel of special analysis, which provides uniform toughness and has the ability to take a temper for a fine, lasting cutting edge. Shanks are drawn from the bar, but on socket tools the blades are invisibly welded to sockets of seamless drawn steel tubing, the best known method of producing sockets for strength and uniform shape.

After the final inspection, Chisels, Gouges and Draw Knives are regularly packed one-half dozen in a box, and boxes are neatly and distinctly labeled. They are now ready for the trade and are backed by the Greenlee guarantee against defects in materials or workmanship.

As a result of selecting the best in materials, the care used in forming, heat-treating and finishing, and the rigid inspection throughout these processes, GREENLEE TOOLS are a most attractive and satisfactory line to handle. They are easy to sell and they stay sold.



A SAMPLE PACKAGE



## No. 200 Socket Butt Chisel

BEVEL EDGE — LEATHER TIP

The No. 200 Greenlee Socket Butt Chisel has beveled edges and is fitted with three-ply leather-tipped hardwood handle. Blade, socket and handle, including leather tip, are fully polished.

This chisel has a thin, light blade, made of high carbon tool steel, measuring  $2\frac{3}{4}$  inches from cutting edge to the shoulder, and the socket is made of seamless steel tubing, invisibly welded to the blade. The overall length ranges from 9 inches on the smallest size to 10 inches on the largest, both handle and socket being short in keeping with the balance of the tool.

For set packages see pages 50 and 51.

Standard package  $\frac{1}{2}$  dozen in a box. Listed sizes carried in stock.

## LIST PRICE AND WEIGHT PER DOZEN

Weight in Pounds

Size	Price	Weight	Size	Price	Weight
$\frac{1}{8}$ "	\$14.00	3	$\frac{7}{8}$ "	\$18.00	4
$\frac{1}{4}$ "	14.00	3	1"	18.50	$4\frac{1}{2}$
$\frac{3}{8}$ "	14.00	3	$1\frac{1}{4}$ "	20.50	$5\frac{1}{4}$
$\frac{1}{2}$ "	14.00	$3\frac{1}{4}$	$1\frac{1}{2}$ "	22.00	6
$\frac{5}{8}$ "	15.50	$3\frac{1}{2}$	$1\frac{3}{4}$ "	24.00	$6\frac{1}{2}$
$\frac{3}{4}$ "	16.00	$3\frac{3}{4}$	2"	25.00	$7\frac{1}{4}$

Net extra for bevel edges, see discount sheet.



## Tools for the Craftsman



### No. 220 Short Socket Firmer Chisel

BEVEL EDGE — LEATHER TIP

The Greenlee No. 220 Short Socket Firmer Chisel has beveled edges, and is fitted with three-ply leather-tipped hardwood handle. Blade, socket and handle, including leather tip, are fully polished.

This chisel is made of the highest quality material, the blade measuring  $4\frac{1}{2}$  inches from cutting edge to shoulder. The overall length ranges from  $11\frac{1}{2}$  inches on the smaller sizes to  $12\frac{1}{2}$  inches on the larger.

For set packages see pages 50 and 51.

Standard package,  $\frac{1}{2}$  dozen in a box. Sizes listed carried in stock.

#### LIST PRICE AND WEIGHT PER DOZEN

Weight in Pounds

Size	Price	Weight	Size	Price	Weight
$\frac{1}{8}$ "	\$14.00	$3\frac{1}{4}$	$\frac{7}{8}$ "	\$18.00	$4\frac{1}{4}$
$\frac{1}{4}$ "	14.00	$3\frac{1}{4}$	1"	18.50	5
$\frac{3}{8}$ "	14.00	$3\frac{1}{4}$	$1\frac{1}{4}$ "	20.50	6
$\frac{1}{2}$ "	14.00	$3\frac{1}{2}$	$1\frac{1}{2}$ "	22.00	$6\frac{3}{4}$
$\frac{5}{8}$ "	15.50	$3\frac{3}{4}$	$1\frac{3}{4}$ "	24.00	8
$\frac{3}{4}$ "	16.00	4	2"	25.00	$9\frac{1}{2}$

Net extra for beveled edges, see discount sheet

## Tools for the Craftsman



### No. 230 Socket Firmer Chisel

BEVEL EDGE — LEATHER TIP

Our No. 230 Greenlee Socket Firmer Chisel has beveled edges and is fitted with three-ply leather-tipped hardwood handle. Blade, socket and handle, including leather tip, are fully polished.

This chisel is made of selected high-carbon tool steel, and the socket is formed from seamless steel tubing, invisibly welded to the blade. The overall length ranges from 13 inches on the smaller to  $14\frac{1}{2}$  inches on the larger sizes, all being made with blade  $6\frac{1}{4}$  inches long.

For set packages see pages 50 and 51.

Standard package,  $\frac{1}{2}$  dozen in a box. Sizes listed carried in stock.

#### LIST PRICE AND WEIGHT PER DOZEN

Weight in Pounds

Size	Price	Weight	Size	Price	Weight
$\frac{1}{8}$ "	\$14.00	$3\frac{1}{2}$	$\frac{7}{8}$ "	\$18.00	$6\frac{1}{4}$
$\frac{1}{4}$ "	14.00	$3\frac{1}{2}$	1"	18.50	8
$\frac{3}{8}$ "	14.00	$3\frac{3}{4}$	$1\frac{1}{4}$ "	20.50	$8\frac{1}{4}$
$\frac{1}{2}$ "	14.00	$4\frac{1}{4}$	$1\frac{1}{2}$ "	22.00	9
$\frac{5}{8}$ "	15.50	$5\frac{1}{4}$	$1\frac{3}{4}$ "	24.00	12
$\frac{3}{4}$ "	16.00	6	2"	25.00	13

Add net extra charge for bevel edges, see discount sheet.





## Tools for the Craftsman



### No. 235 Socket Firmer Chisel

PLAIN BLADE — ALL WOOD HANDLE

Our No. 235 Greenlee Socket Firmer Chisel has a plain blade  $6\frac{1}{4}$  inches long and is fitted with an all wood handle of selected hardwood. The blade, socket and handle are fully polished. Overall lengths range from 13 to  $14\frac{1}{2}$  inches.

As on our No. 230, the blade is made from high-carbon tool steel, and the socket is formed from seamless steel tubing invisibly welded. The omission of bevel edges and the substitution of an all wood handle materially reduce the price.

Standard package,  $\frac{1}{2}$  dozen in a box. Sizes listed in stock.

#### LIST PRICE AND WEIGHT PER DOZEN

*Weight in Pounds*

Size	Price	Weight	Size	Price	Weight
$\frac{1}{8}$ "	\$12.50	$3\frac{1}{2}$	$\frac{7}{8}$ "	\$16.00	$6\frac{1}{4}$
$\frac{1}{4}$ "	12.50	$3\frac{1}{2}$	1"	16.50	8
$\frac{3}{8}$ "	12.50	$3\frac{3}{4}$	$1\frac{1}{4}$ "	18.50	$8\frac{1}{4}$
$\frac{1}{2}$ "	12.50	$4\frac{1}{4}$	$1\frac{1}{2}$ "	20.00	9
$\frac{5}{8}$ "	14.00	$5\frac{1}{4}$	$1\frac{3}{4}$ "	22.00	12
$\frac{3}{4}$ "	14.50	6	2"	23.00	13

## Tools for the Craftsman



### No. 236 Socket Firmer Chisel

PLAIN BLADE — LEATHER TIP

The No. 236 Greenlee Socket Firmer Chisel has plain edges and is supplied with leather-tipped handle of three-ply thickness. Blade, socket, and handle, including leather tip, are fully polished.

This Firmer Chisel is made of selected high-carbon tool steel, and the socket is formed from seamless steel tubing, invisibly welded to the blade. The overall length varies from 13 inches on the smaller sizes to  $14\frac{1}{2}$ " on the larger, all sizes having  $6\frac{1}{4}$  inch blade.

Standard package,  $\frac{1}{2}$  dozen in a box. Listed sizes carried in stock.

#### LIST PRICE AND WEIGHT PER DOZEN

*Weight in Pounds*

Size	Price	Weight	Size	Price	Weight
$\frac{1}{8}$ "	\$14.00	$3\frac{1}{2}$	$\frac{7}{8}$ "	\$18.00	$6\frac{1}{4}$
$\frac{1}{4}$ "	14.00	$3\frac{1}{2}$	1"	18.50	8
$\frac{3}{8}$ "	14.00	$3\frac{3}{4}$	$1\frac{1}{4}$ "	20.50	$8\frac{1}{4}$
$\frac{1}{2}$ "	14.00	$4\frac{1}{4}$	$1\frac{1}{2}$ "	22.00	9
$\frac{5}{8}$ "	15.50	$5\frac{1}{4}$	$1\frac{3}{4}$ "	24.00	12
$\frac{3}{4}$ "	16.00	6	2"	25.00	13



## Tools for the Craftsman



The illustration to the left shows the Box "A" type of chisel set container. It is a well-made, hinged-cover box, nicely finished, and has grooved partitions for holding the tools.

This style of set package is available for assortments of 6 No. 200 Socket Butt Chisels, and for sets of 6, 8, 9 and 12 Nos. 220 and 230 Firmer length chisels. See list prices of sets on opposite page. Boxes are packed in cartons and labelled.

To the right we illustrate the Leatherette Roll for chisel sets. This style of container is available for sets of 6 No. 200 Socket Butt Chisels and for sets of 6 and 12 No. 220 Short Firmer and No. 230 Socket Firmer Chisels. For set list prices, see opposite page.

Flannel lined flaps cover the chisels, and the cutting edges are protected by individual pockets. Sets in Rolls are packed in cartons and properly labelled.



### LIST PRICE AND WEIGHT EACH

*Weight in Pounds*

Box A for	Price	Weight
6 No. 200	\$1.00	1 1/4
6 Nos. 220 and 230	1.00	1 1/2
8 Nos. 220 and 230	1.25	2
9 Nos. 220 and 230	1.35	2
12 Nos. 220 and 230	1.60	3
<b>Leatherette Roll for</b>		
6 No. 200	.80	3/8
6 Nos. 220 and 230	.90	3/8
12 Nos. 220 and 230	1.50	3/4

## Tools for the Craftsman



### Chisel Set Assortments

#### LIST PRICE AND WEIGHT EACH

*Weight in Pounds*

Sets of	Containing	Price	Weight
6 No. 200	1/4", 1/2", 3/4", 1", 1 1/4" and 1 1/2"	\$ 8.95	1 3/4
6 No. 220	1/4", 1/2", 3/4", 1", 1 1/2" and 2"	9.30	2
8 No. 220	1/4", 3/8", 1/2", 3/4", 1", 1 1/4", 1 1/2" and 2"	12.30	3
9 No. 220	1/8", 1/4", 3/8", 1/2", 5/8", 3/4", 1", 1 1/4" and 1 1/2"	12.75	2 3/4
12 No. 220	1/8", 1/4", 3/8", 1/2", 5/8", 3/4", 7/8", 1", 1 1/4", 1 1/2", 1 3/4" and 2"	18.50	4 1/2
6 No. 230	1/4", 1/2", 3/4", 1", 1 1/2" and 2"	9.30	3
8 No. 230	1/4", 3/8", 1/2", 3/4", 1", 1 1/4", 1 1/2" and 2"	12.30	4
9 No. 230	1/8", 1/4", 3/8", 1/2", 5/8", 3/4", 1", 1 1/4", 1 1/2"	12.75	3 1/2
12 No. 230	1/8", 1/4", 3/8", 1/2", 5/8", 3/4", 7/8", 1", 1 1/4", 1 1/2", 1 3/4" and 2"	18.50	6

The above list prices apply to various sets packed in common wood or paper boxes. If fancy packages are desired, see opposite page for price list of Box "A" and Leatherette Rolls. In pricing sets, also add net additional charge for bevel edges, see discount sheet.

Symbol numbers can be used for ordering sets if desired. Prefix letter "R" denotes sets of 6; letter "V", sets of 8; letter "W", sets of 9; and letter "Y", sets of 12. The prefix letter should be followed by catalog number of chisels required, then suffix letter "A" for Box "A" and letter "D" for Rolls. In explanation symbol V220A would cover a set of 8 No. 220 Short Socket Firmer Chisels packed in Box A.

Special assortments of chisels can be furnished and prices will be quoted on application.





*Tools for the Craftsman*



### No. 251 Tree Surgeons' Socket Chisel

Cutting excavations in live trees is one of the most severe requirements a wood chisel must handle. To take care of work of this nature, the No. 251 Tree Surgeons' Socket Chisel was designed. The blade and socket are made from one piece of high-grade alloy steel, the socket first turned to shape and bored, then the blade is forged from the remaining material.

The blade ranges in length from 5 to 6 inches and has beveled edges with cutting edge ground at a slight curve. The upper section of the blade as well as the socket is made heavy for strength, and the entire tool is heat-treated. Handle is of hickory, reenforced with a turned steel ferrule.

Standard package, 1/2 dozen in box. Listed sizes in stock.

#### LIST PRICE AND WEIGHT PER DOZEN

*Weight in Pounds*

Size	Price	Weight
1/2"	\$24.00	7
3/4"	27.00	8
1"	30.00	9
1 1/4"	33.00	13 3/4
1 1/2"	36.00	14 1/2

*Tools for the Craftsman*



### No. 341 Tree Surgeons' Socket Gouge

This type of tool is required to handle the very severe work of cutting excavations in live trees and, therefore, the one-piece construction is employed. Both the blade and socket are made from the same steel section, the socket first turned and bored, and then the blade is forged from the remaining material. This gouge has what is termed a flat sweep, and the cutting end is ground with an outside bevel.

High-grade alloy steel is used, the upper sections of blade and socket are made heavy, and the entire tool is heat-treated. The blade length ranges from 5 to 6 inches, and hickory handles, reenforced with heavy turned steel ferrules, are employed.

Standard package, 1/2 dozen in box. Sizes listed in stock.

#### LIST PRICE AND WEIGHT PER DOZEN

*Weight in Pounds*

Size	Price	Weight
1/2"	\$27.00	7
3/4"	30.00	8 1/2
1"	33.00	9 3/4
1 1/4"	36.00	14
1 1/2"	39.00	15 3/4



*Tools for the Craftsman*



## No. 261 Socket Framing Chisel

BEVEL EDGE — RINGED HANDLE

Our No. 261 Greenlee Socket Framing Chisel has beveled edges and a long hardwood handle fitted with a nickel plated, pressed steel ring. The blade, socket and handle are fully polished.

The blade, measuring 8 inches in length, is of extra heavy cross section and is made of solid steel. The socket is of heavier gauge and larger and longer than that required on the comparatively light firmer chisel. The overall length ranges from 16 inches on the smallest to 17½ inches on the largest sizes.

Standard package, ½ dozen in a box. Sizes as listed carried in stock.

### LIST PRICE AND WEIGHT PER DOZEN

*Weight in Pounds*

Size	Price	Weight	Size	Price	Weight
¼"	\$9.00	7½	1"	\$11.00	13½
⅜"	9.00	7¾	1¼"	12.00	16
½"	9.00	8¼	1½"	13.00	18
⅝"	9.50	10½			
¾"	10.00	11	1¾"	14.50	22
7/8"	10.50	11½	2"	16.00	24

Add net extra for bevel edges, see discount sheet.

*Tools for the Craftsman*



## No. 265 Socket Framing Chisel

PLAIN BLADE — RINGED HANDLE

The No. 265 Greenlee Socket Framing Chisel has plain edges, and a long hardwood handle fitted with nickel plated, pressed steel ring. The blade, socket and handle are fully polished.

The blade, measuring 8 inches in length, is of extra heavy cross section and is made of solid steel. The socket is of heavier-gauge tubing and larger and longer than that required on the comparatively light firmer chisel. The overall length ranges from 16 inches on the smallest to 17½ inches on the largest sizes.

Standard package, ½ dozen in a box. Listed sizes carried in stock.

### LIST PRICE AND WEIGHT PER DOZEN

*Weight in Pounds*

Size	Price	Weight	Size	Price	Weight
¼"	\$ 9.00	7½	1"	\$11.00	13½
⅜"	9.00	7¾	1¼"	12.00	16
½"	9.00	8¼	1½"	13.00	18
⅝"	9.50	10½			
¾"	10.00	11	1¾"	14.50	22
7/8"	10.50	11½	2"	16.00	24





## Tools for the Craftsman



### No. 290 Socket Slick

The Greenlee No. 290 Socket Slick has an oval back and a 10-inch long blade, forged from solid high-carbon tool steel. It is fitted with a maple handle, 14 inches long, making an overall dimension of about 30 inches. The socket is formed from heavy-gauge seamless tubing, invisibly welded to the blade. Standard package, 1/6 dozen in a box. Listed sizes in stock.

#### LIST PRICE AND WEIGHT PER DOZEN

		<i>Weight in Pounds</i>			
Size	Price	Weight	Size	Price	Weight
2 1/2"	\$37.50	52	3 1/2"	\$51.00	65
3"	43.00	61	4"	60.00	69



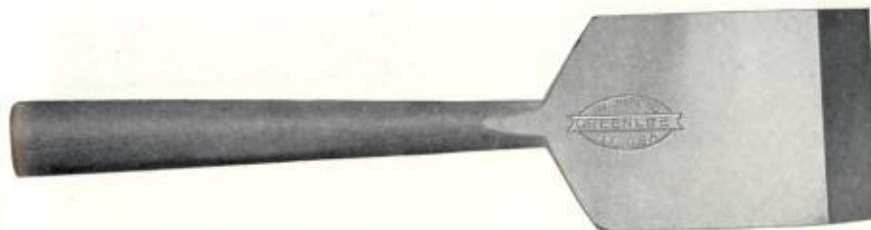
### No. 295 Socket Corner Chisel

Our No. 295 Socket Corner Chisel has an 8-inch, right-angle blade and is fitted with a hardwood handle, reenforced with a nickel plated, pressed steel ring. Outside of blade is polished, inside gilded. Standard package, 1/2 dozen in a box. Sizes listed in stock.

#### LIST PRICE AND WEIGHT PER DOZEN

		<i>Weight in Pounds</i>	
Size	Price	Weight	
3/4"	\$22.50	13	
1"	25.50	19	

## Tools for the Craftsman



### No. 390 Glaziers' Chisel

This all steel chisel is especially designed for glaziers' use. It has a cutting bevel about 3/8 of an inch long for driving points and is useful for removing putty and cleaning out sash. Due to its weight and construction, it is also a convenient tool for setting and adjusting plate glass. Short or worn-out wood chisels are sometimes used for glazing, but these tools do not have sufficient weight for the purpose, and the wooden handle is not serviceable when driving points.

The above Glaziers' Chisel is made from a solid piece of steel, the blade having a width of 2-inches, length of 2 3/4-inches, and thickness of about 3/8-inch. The overall dimension is 8-inches. The face, back, and cutting bevel are fully polished, and the balance of the tool is sand-blasted.

Standard package is six in a box. Size listed in stock.

#### LIST PRICE AND WEIGHT PER DOZEN

		<i>Weight in Pounds</i>	
Size	Price	Weight	
2"	\$9.00	12	



### No. 330 Socket Firmer Gouge

OUTSIDE BEVEL — LEATHER TIP

The No. 330 Greenlee Socket Firmer Gouge has an outside bevel and a three-ply leather-tipped hardwood handle. The socket and both the convex and concave surfaces are fully polished.

Measuring from cutting edge to shoulder, this gouge has a blade length of  $6\frac{1}{4}$  inches and an overall dimension of 13 inches on the smaller sizes to  $14\frac{1}{2}$  inches on the larger.

No. 336 GREENLEE SOCKET FIRMER GOUGE is the same as the No. 330, illustrated above, except that it has inside cutting bevel. It takes the list published below.

Standard package,  $\frac{1}{2}$  dozen in a box. Sizes listed in stock.

#### LIST PRICE AND WEIGHT PER DOZEN

*Weight in Pounds*

Size	Price	Weight	Size	Price	Weight
$\frac{1}{8}$ "	\$10.50	4	$\frac{7}{8}$ "	\$13.25	7
$\frac{1}{4}$ "	10.50	4	1"	14.00	9
$\frac{3}{8}$ "	10.50	$4\frac{1}{4}$	$1\frac{1}{4}$ "	15.50	11
$\frac{1}{2}$ "	11.00	$4\frac{1}{2}$	$1\frac{1}{2}$ "	17.25	12
$\frac{5}{8}$ "	11.50	6	$1\frac{3}{4}$ "	18.75	$13\frac{1}{2}$
$\frac{3}{4}$ "	12.25	$6\frac{1}{2}$	2"	21.25	15



### No. 335 Socket Firmer Gouge

INSIDE BEVEL — ALL WOOD HANDLE

GREENLEE No. 335 Socket Firmer Gouge has an inside bevel and is fitted with an all wood handle of selected hardwood. The socket and both the convex and concave surfaces are fully polished.

The blade, measuring from cutting edge to shoulder, has a length of  $6\frac{1}{4}$  inches, and the overall dimension ranges from 13 inches on the smaller to  $14\frac{1}{2}$  inches on the larger sizes.

No. 331 GREENLEE SOCKET FIRMER GOUGE is the same as the No. 335, illustrated above, with the exception that it has an outside cutting bevel. It takes the list as published below.

Standard package,  $\frac{1}{2}$  dozen in a box. Sizes listed in stock.

#### LIST PRICE AND WEIGHT PER DOZEN

*Weight in Pounds*

Size	Price	Weight	Size	Price	Weight
$\frac{1}{8}$ "	\$ 9.50	4	$\frac{7}{8}$ "	\$12.00	7
$\frac{1}{4}$ "	9.50	4	1"	12.75	9
$\frac{3}{8}$ "	9.50	$4\frac{1}{4}$	$1\frac{1}{4}$ "	14.25	11
$\frac{1}{2}$ "	10.00	$4\frac{1}{2}$	$1\frac{1}{2}$ "	16.00	12
$\frac{5}{8}$ "	10.50	6	$1\frac{3}{4}$ "	17.50	$13\frac{1}{2}$
$\frac{3}{4}$ "	11.25	$6\frac{1}{2}$	2"	20.00	15





## Tools for the Craftsman



### No. 400 Tang Butt Chisel

BEVEL EDGE — LEATHER TIP

The No. 400 Greenlee Tang Butt Chisel has beveled edges, is fitted with three-ply leather-tipped handle of hardwood, and the tenon is reinforced by heavy brass ferrule. The blade, neck, and handle, including leather tip, are fully polished.

This chisel has a thin, light blade made of high-carbon tool steel, measuring 3 inches from cutting edge to shoulder. The neck, round, bolster and tang are drawn from the bar. The overall length varies from 8½ inches on the smaller sizes to 9¼ inches on the larger.

The No. 405 TANG BUTT CHISEL with plain blade and all wood handle is available in sizes listed below. Prices quoted on application.

Standard package, ½ dozen in a box. Sizes listed in stock.

#### LIST PRICE AND WEIGHT PER DOZEN

Weight in Pounds

Size	Price	Weight	Size	Price	Weight
1/8"	\$6.40	2 1/2	7/8"	\$7.60	4
1/4"	6.40	2 1/2	1"	8.20	4 1/2
3/8"	6.40	2 3/4	1 1/4"	9.50	5 1/4
1/2"	6.40	3	1 1/2"	11.00	5 1/2
5/8"	6.70	3 1/4	1 3/4"	12.75	6
3/4"	7.10	3 1/2	2"	15.00	7 1/2

Add net extra charge for bevel edges, see discount sheet.

## Tools for the Craftsman



### No. 430 Tang Firmer Chisel

BEVEL EDGE — LEATHER TIP

Greenlee No. 430 Tang Firmer Chisel has beveled edges, is fitted with three-ply leather-tipped handle of hardwood, and the tenon is supported by a heavy brass ferrule. The blade, neck, and handle, including the leather tip, are fully polished.

This tool has a light blade made of selected tool steel, measuring 4½ inches from cutting edge to shoulder. The overall length varies from 10½ inches on the smaller to 13 inches on the larger sizes.

The No. 435 TANG FIRMER CHISEL with plain blade and all wood handle is available also in sizes listed below. Prices quoted on application.

Standard package, ½ dozen in a box. Listed sizes in stock.

#### LIST PRICE AND WEIGHT PER DOZEN

Weight in Pounds

Size	Price	Weight	Size	Price	Weight
1/8"	\$6.40	3 1/4	7/8"	\$ 7.60	5
1/4"	6.40	3 1/4	1"	8.20	6
3/8"	6.40	3 1/2	1 1/4"	9.50	6 1/2
1/2"	6.40	3 3/4	1 1/2"	11.00	7 1/4
5/8"	6.70	4 1/2	1 3/4"	12.75	9
3/4"	7.10	4 3/4	2"	15.00	9 3/4

Add net extra for bevel edges. See discount sheet.



## Tools for the Craftsman



NO. 476-S SHORT TURNING CHISEL



NO. 576-S SHORT TURNING GOUGE



NO. 596-S SHORT PARTING TOOL

### Greenlee Short Turning Tools

Short Turning Tools, as illustrated above, were designed primarily for wood lathe use in the home workshop. They have the same high-class workmanship given to the professional length tools, the lower selling price being due to the shortening of the blades and handles.

All sizes, 1/2 inch and smaller, are regularly made with a 4-inch blade, while larger sizes have a 5-inch blade. The overall length varies from 13 to 14 inches. A tough alloy steel with heat resisting qualities is used and the tools are completely hardened. They are fitted with polished maple handles, 8 inch long, and the tenons are reenforced with nickel plated steel ferrules.

Seven sizes and types of Turning Chisels, four sizes of Turning Gouges, and one Parting Tool are available in this line, as per listing on opposite page. Standard packing is 1/2 dozen in a box.

## Tools for the Craftsman

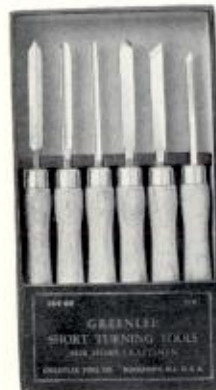


### Greenlee Short Turning Tools

#### LIST PRICE AND WEIGHT PER DOZEN

Weight in Pounds

No.	Size	Price	Weight
476-S Regular skew	1/4"	\$ 9.00	4 1/4
476-S Regular skew	1/2"	9.00	5
476-S Regular skew	3/4"	11.40	6 1/2
476-S Regular skew	1"	13.20	7 1/2
476-S Spear point	1/4"	9.00	4 1/4
476-S Spear point	1/2"	9.00	5
476-S Round nose	1/2"	9.00	5
576-S	1/4"	10.80	4 1/4
576-S	1/2"	10.80	5
576-S	3/4"	13.20	6 3/4
576-S	1"	15.00	8
596-S	1/2"	9.60	5



The illustration to the left shows a set of six Short Turning Tools packed in a Display Box. A notched wood separator keeps the tools in place. The same style of box is also available for an assortment of eight tools.

More complete sets of eleven or twelve tools can also be put up in common wood or paper boxes, all tools packed loose.

#### LIST PRICE EACH FOR SETS

Set of six, containing one each 1/4-inch and 1/2-inch regular skew Turning Chisels, one 1/2-inch round nose, one each 1/4-inch and 1/2-inch Turning Gouges, and one 1/2-inch Parting Tool in Display Box ..... \$4.85. Weight, 2 1/2 pounds.

Set of eight, containing one each 1/4-inch, 1/2-inch and 3/4-inch regular skew Turning Chisels, one 1/2-inch round nose, one each 1/4-inch, 1/2-inch and 3/4-inch Turning Gouges, and one 1/2-inch Parting Tool in Display Box ..... \$6.90. Weight, 3 3/4 pounds.

Set of eleven, containing all sizes except 1-inch Turning Gouge, packed in common box ..... \$9.50. Weight, 5 1/4 pounds.

Set of twelve, containing all sizes, packed in common box ..... \$10.75. Weight, 6 pounds.





## Tools for the Craftsman



### No. 476 Turning Chisel

Our No. 476 Greenlee Turning Chisel has a blade measuring 8 inches long on sizes 1-inch and wider, smaller sizes being slightly shorter. It is fitted with a polished hardwood handle, 9 inches long, reinforced by a heavy cast ferrule, brass plated.

Stock chisels have cutting edges ground on both sides of blade, as per left-hand illustration below. Other styles of points are special, taking a list advance of \$1.00 per dozen.

No. 474 designates a Turning Chisel without handle. Use list below, deducting \$2.75 per dozen. For weight, deduct 4 pounds per dozen.

Standard package, 1/2 dozen in a box. Sizes listed in stock.

#### LIST PRICE AND WEIGHT PER DOZEN

*Weight in Pounds*

Size	Price	Weight	Size	Price	Weight
1/8"	\$8.75	6	7/8"	\$10.50	9 1/2
1/4"	8.75	6	1"	11.75	11 1/2
3/8"	8.75	6 3/8	1 1/4"	13.50	13 1/2
1/2"	8.75	7 3/8	1 1/2"	16.00	15
5/8"	9.25	8	1 3/4"	18.75	16
3/4"	9.75	9	2"	21.25	18



Regular  
Skew



Right  
Skew



Left  
Skew



Square  
Point



Spear  
Point



Round  
Point

## Tools for the Craftsman



### No. 576 Turning Gouge

The No. 576 Greenlee Turning Gouge has a blade measuring 8 inches long on sizes 1-inch and wider, the smaller sizes having a slightly reduced length to give added strength. A 9-inch hardwood handle with the tenon supported by a heavy brass plated cast ferrule is used.

The service required of a Turning Gouge is often severe, and to provide proper strength, we make the blade with a substantial cross section. The cutting section has an unusual degree of hardness as is required in wood turning.

The No. 574 GREENLEE TURNING GOUGE is the same as the above, except without handle. Use list given below, less \$2.75 per dozen. For weight, deduct 4 pounds per dozen.

Regularly packed 1/2 dozen in a box. Listed sizes in stock.

#### LIST PRICE AND WEIGHT PER DOZEN

*Weight in Pounds*

Size	Price	Weight	Size	Price	Weight
1/8"	\$10.25	5 3/4	7/8"	\$13.25	10 3/4
1/4"	10.25	5 3/4	1"	14.25	11 1/4
3/8"	10.25	6 1/2	1 1/4"	17.25	13 1/2
1/2"	10.25	7	1 1/2"	21.25	15 1/4
5/8"	10.75	8 1/2	1 3/4"	24.50	16 1/4
3/4"	12.00	8 3/4	2"	29.00	20 1/2



## Tools for the Craftsman



### No. 596 Parting Tool

Our Greenlee No. 596 Parting Tool has a blade 7 inches in length and is fitted with 9-inch long polished hardwood handle. The tenon is well supported by a heavy brass plated cast ferrule.

The blade is thin at the edges with a heavy section down the center. The thickness of the point on the  $\frac{1}{2}$ -inch size is  $\frac{5}{32}$ -inch; on the  $\frac{5}{8}$ -inch size,  $\frac{6}{32}$ -inch; and on the  $\frac{3}{4}$ -inch size,  $\frac{7}{32}$ -inch.

The 594 GREENLEE PARTING TOOL is the same as the above, except without handle. It takes the same list as published below, deducting \$2.75 per dozen. For weight, deduct 4 pounds per dozen.

Standard package,  $\frac{1}{2}$  dozen in a box. Sizes listed carried in stock.

#### LIST PRICE AND WEIGHT PER DOZEN

*Weight in Pounds*

Size	Price	Weight
$\frac{1}{2}$ "	\$8.75	6
$\frac{5}{8}$ "	9.25	$6\frac{1}{2}$
$\frac{3}{4}$ "	9.75	$7\frac{1}{2}$

## Tools for the Craftsman



### No. 600 Razor Blade Draw Knife

The No. 600 Greenlee Razor Blade Draw Knife has a blade measuring a full  $1\frac{3}{8}$  inches in width and is made from a solid piece of steel. The handles are of hardwood, mounted on shanks which pass through the handles, and are securely held in place by riveting on top of nickel plated caps.

This is the most popular style of draw knife, as the blade has sufficient stiffness and rigidity, yet is of light weight due to a concave section between the cutting bevel and the rib. It is highly finished, sharpened, and ready for use.

Standard package,  $\frac{1}{2}$  dozen in a box. Sizes listed in stock.

#### LIST PRICE AND WEIGHT PER DOZEN

*Weight in Pounds*

Length	Price	Weight
6"	\$13.50	$11\frac{1}{4}$
7"	13.50	$13\frac{1}{2}$
8"	13.50	$13\frac{3}{4}$
9"	14.40	$14\frac{1}{2}$
10"	15.60	18
12"	18.00	$18\frac{1}{2}$
14"	21.00	$20\frac{3}{4}$





## Tools for the Craftsman



### No. 625 Heavy Stripping Knife

The No. 625 Greenlee Heavy Stripping Knife is made very heavy for the most severe duty. The side of the blade opposite the cutting edge is thick, but gradually tapers toward the cutting edge, which is formed with a short and sharper bevel.

This blade is  $1\frac{3}{4}$  inches wide, of laid steel, and with both the high-carbon tool steel and the mild steel increased to make this heavier section. The handles are made of hardwood, finished natural. They are formed with considerable enlargement near the end to give better grip.

The blade is fully polished, and the shanks are enameled black. The handles are fitted with heavy steel ferrules, but no caps are required. These knives are regularly furnished two in each package, carefully wrapped.

Listed sizes carried in stock.

#### LIST PRICE AND WEIGHT PER DOZEN

*Weight in Pounds*

Length	Price	Weight
12"	\$21.60	28
14"	25.20	31

## Tools for the Craftsman



### No. 625X Extra Heavy Stripping Knife

Our No. 625X Greenlee Extra Heavy Stripping Knife is of similar construction to the No. 625, but has a blade  $2\frac{1}{2}$  inches wide. The blade is fully polished, and the shanks are enameled black.

The handles are hardwood, finished natural, and are large and full formed with an enlarged end providing a good grip. They are fitted with heavy steel ferrules, but with this form of handle no cap is required.

We recommend this Knife for the user whose requirements are unusually severe. It offers real economy where maximum wear is desired. The Knife is especially adapted for peeling bark from poles or for similar uses.

Size as listed carried in stock. Standard package, two in a bundle.

#### LIST PRICE AND WEIGHT PER DOZEN

*Weight in Pounds*

Size	Price	Weight
14"	\$25.20	35



## No. 635 Folding-Handle Draw Knife

The Folding-Handle Draw Knife, Greenlee No. 635, has the same style of blade as our No. 600 and is fitted with handles which fold over the edge, protecting it and preventing injury to anything with which it may come in contact.

The joints are made by lugs on the shanks, fitting in slots on the blade extensions, insuring rigidity and quick adjustment. The joints are locked with wing nuts so that no tool is needed to lock or release them.

To give light weight, we selected the Razor Blade pattern, and use shanks and wing nuts of high-grade malleable. We supply mahogany stained handles, reinforced with a steel ring and slotted to fit the cutting edge of the knife.

The knife when folded packs in a space  $3\frac{1}{2}$  inches wide and  $1\frac{1}{2}$  inches high. They are packed individually in paper boxes.

Listed sizes carried in stock.

### LIST PRICE AND WEIGHT PER DOZEN

Weight in Pounds

Length	Price	Weight
6"	\$28.00	19 $\frac{3}{4}$
7"	28.00	20 $\frac{1}{2}$
8"	28.00	21
9"	29.00	22
10"	30.50	22 $\frac{1}{2}$



## Chisel Handles

We list below all the various handles which we supply in connection with Greenlee chisels and gouges. These handles are all made from selected hardwood carefully turned to special pattern. The caps on all handles so fitted are made of three layers of well tanned leather. Wood and leather are turned to finished size at one time, and both are thoroughly polished. The all-wood handles for Framing Chisels are fitted with polished steel rings. All handles for tang tools have brass ferrules.

### LIST PRICE PER DOZEN

No.		All Wood	Leather Tipped	Weight Lbs.
A—	for Socket Firmer Chisels and Gouges $\frac{1}{8}$ to $\frac{1}{2}$ "	\$ .80	\$1.10	1
B.....	$\frac{5}{8}$ to $\frac{7}{8}$ "	.84	1.16	1 $\frac{1}{4}$
C.....	1 to $1\frac{1}{2}$ "	.88	1.25	1 $\frac{1}{2}$
D.....	$1\frac{3}{4}$ & 2"	.94	1.35	2
Assorted.....		.86	1.20	1 $\frac{1}{2}$
E—	for Socket Butt Chisels..... $\frac{1}{8}$ to $\frac{7}{8}$ "		1.13	1
F.....	1 to 2"		1.30	1 $\frac{1}{2}$
Assorted.....			1.20	1 $\frac{1}{4}$
G—	for Tang Firmer Chisels and Gouges $\frac{1}{8}$ to $\frac{1}{2}$ "	1.11	1.32	1
H.....	$\frac{5}{8}$ to $\frac{7}{8}$ "	1.16	1.43	1 $\frac{1}{4}$
I.....	1 to $1\frac{1}{2}$ "	1.21	1.54	1 $\frac{1}{2}$
J.....	$1\frac{3}{4}$ & 2"	1.32	1.70	2
Assorted.....		1.18	1.47	1 $\frac{1}{2}$
K—	for Tang Butt Chisels..... $\frac{1}{8}$ to $\frac{7}{8}$ "		1.38	1
L.....	1 to $1\frac{1}{2}$ "		1.51	1 $\frac{1}{4}$
M.....	$1\frac{3}{4}$ & 2"		1.65	1 $\frac{1}{2}$
Assorted.....			1.46	1 $\frac{1}{2}$
N—	for Socket Framing Chisels..... $\frac{1}{4}$ to $\frac{1}{2}$ "	1.10		1 $\frac{1}{2}$
O.....	$\frac{5}{8}$ to $\frac{7}{8}$ "	1.17		1 $\frac{3}{4}$
P.....	1 to $1\frac{1}{2}$ "	1.24		2 $\frac{1}{4}$
Q.....	$1\frac{3}{4}$ & 2"	1.30		2 $\frac{3}{4}$
Assorted.....		1.20		2 $\frac{1}{4}$
R—	for standard Turning Tools..... $\frac{1}{8}$ to $\frac{7}{8}$ "	3.00		4
S.....	1 to 2"	3.00		4 $\frac{1}{2}$
T—	for Short Turning Tools..... All Sizes	.75		3 $\frac{1}{4}$
U—	for Slicks.....	3.00		11
V—	for Tree Surgeons' Tools..... $\frac{1}{2}$ - $\frac{3}{4}$ - 1"	2.40		2
W—	for Tree Surgeons' Tools..... $1\frac{1}{4}$ - $1\frac{1}{2}$ "	2.40		3

Handles are packed one dozen in a paper box. Assorted dozens are made of the various sizes in the proportion used in packing sets.





## Tools for the Craftsman



### Jaxon Brand No. 22B Solid-Center Auger Bit

The Jaxon Brand of Solid-Center Auger Bit is carried to meet the demand of the trade for a medium priced and dependable tool of this type. It has what is known as common finish, black head and point and is made to standard Auger Bit twist and overall dimensions.

In the manufacture of this bit we employ the same material as used for Greenlee Brand tools and the same heat-treatment is given. The difference in price is represented entirely by the finish.

Standard package is 1/2 dozen in a box. Sizes listed are in stock.

#### LIST PRICE AND WEIGHT PER DOZEN

*Size in Sixteenths — Weight in Pounds*

Size	Price	Weight	Size	Price	Weight
3	\$4.50	3/4	12	\$ 7.00	3 1/2
4	4.00	1	13	8.00	3 3/4
5	4.00	1 1/4	14	8.00	4
6	4.00	1 1/2	15	9.00	4 1/2
7	4.50	1 3/4			
8	5.00	2	16	9.00	4 3/4
9	5.50	2 1/4	18	10.50	6 1/2
10	6.00	2 1/2	20	12.00	7 1/4
11	7.00	3	24	15.00	8 1/2

## Tools for the Craftsman



NO. 800 SOCKET BUTT CHISEL



NO. 820 SHORT SOCKET FIRMER CHISEL

NO. 830 SOCKET FIRMER CHISEL

### Jaxon Carpenters' Chisels

The Jaxon line of chisels consists of three lengths, the No. 800 with a blade length of 3 inches, the No. 820 with a blade length of 4 1/2 inches and the No. 830 with a 6 1/4-inch blade. All blades are made from a good grade of carbon steel, and sockets are formed from seamless steel tubing, the two sections welded.

All of the above tools have bevel edges and are fitted with two-ply leather-tipped hardwood handles. While not the equal of Greenlee Brand as far as material, finish and handles are concerned, they are serviceable tools and are fully covered by our guarantee.

Usual sizes, 1/8-inch to 2-inch, are available in all numbers, and standard packing is 1/2 dozen in a box. See discount sheet for net price schedules.



**Jaxon Brand**  
**Nos. J3 and J4 Expansive Bits**

Jaxon Brand Expansive Bits are made from the same material and are given the same heat-treatment as Greenlee tools. They have the common finish, and cutting parts and screw point are left black, which permits them to be offered at a medium price. No. J3 will bore  $\frac{1}{2}$ -inch to  $1\frac{1}{2}$ -inch and the J4,  $\frac{7}{8}$  to 3-inch. They are individually packed in paper boxes, six boxes to a carton. See discount sheet for net prices.



**Jaxon Brand**  
**No. 600B Razor Blade Draw Knife**

The No. 600B Jaxon Brand Razor Blade Draw Knife is available in 8-inch and 10-inch lengths only. The material and heat treatment are the same as Greenlee Brand, but this tool has common finish blade and tumbled finish handles. See discount sheet for net price schedule.



### Tools and Machines for the Electrician and Plumber

The major portion of the following twenty-six pages of this catalog are devoted to tools designed for the use of the electrical trade. These items have been segregated into a separate section to make it more convenient for distributors, contractors, and electricians to locate items of particular interest.

The Electrical Line now includes Fast-Boring Auger Bits of four different patterns and lengths, Bell Hangers' Drills or Feeler Bits, Bit Extensions, Knockout Punches and Cutters, Radio Chassis Punches, Joist Borers, Cable Pullers, Hydraulic Conduit and Pipe Benders, Thin-Wall Conduit Benders, Hand-Operated Steel and Copper Tube Benders, and Hydraulic Pipe Pushers.

Many of the items included in this section are designed also for the plumbing trade. For instance, the No. 925 Bit Extension for Auger Bits  $13/16$ -inch and larger, the No. 44 Unispur Auger Bits for boring holes for pipe, the Hydraulic Tools for bending and pushing pipe, and the Steel and Copper Tube Benders. These hand benders will also take care of the bending requirements in the refrigeration, air-conditioning, and related fields.





## Tools for the Craftsman



LOCK SLEEVE OPEN



LOCK SLEEVE CLOSED

### Greenlee Bit Extensions

Pat. 1,758,069

The Greenlee No. 900 Bit Extension has two outstanding features. First the design which permits sufficient strength to drive a bit up to 1-inch diameter but small enough to follow a  $\frac{3}{8}$ -inch bit. This is due to the thin outer shell, which does not drive the bit, the driving coming from the bit chuck within. There are but five major parts, all exposed surfaces of which are nickel plated except the square, which is lacquered green.

The second feature is its positive lock, which prevents the loosening of the holding sleeve, insuring an absolute grip on the shank at all times. This lock consists of a sleeve with a spring tension, which engages the screw sleeve when released, and a  $\frac{3}{32}$ -inch pin, which prevents its turning. An accurately shaped recess in the chuck accommodates the shank of a bit, which is held by drawing the holding sleeve against the corners of the square.

THE GREENLEE NO. 925 BIT EXTENSION is similar to the above in every way, except that it is made extra heavy to follow a  $\frac{13}{16}$ -inch Auger Bit and drive tools up to 2-inch diameter.

Standard packing is one in a leatherette case. Listed sizes in stock.

#### LIST PRICE AND WEIGHT EACH

Weight in Pounds

No. 900	12"	15"	18"	21"	24"	30"
Price	\$2.10	2.20	2.25	2.35	2.40	2.50
Weight	$\frac{3}{4}$	1	$1\frac{1}{8}$	$1\frac{1}{4}$	$1\frac{3}{8}$	$1\frac{5}{8}$
No. 925			18"		24"	
Price			\$2.75		3.00	
Weight			$1\frac{7}{8}$		$2\frac{1}{4}$	

## Tools for the Craftsman



### No. 16 Unispur Electricians' Auger Bit

This pattern of electricians' bit is fast becoming popular, due to its easy and smooth-boring qualities. As its name denotes, it has a single-cutter head and only one outlying spur. It is fitted with a deeply-cut, 8-pitch single screw point for boring one inch in eight turns, provided the screw follows its natural lead.

To take care of electricians' requirements, the twist of this bit is made  $5\frac{1}{2}$  inches long and the tool has an overall dimension of 10 inches, not including the screw point. The twist and round of this bit are highly polished, and the square is lacquered green.

We carry seven sizes of this pattern of electricians' bit in stock, as per sizes listed below. For requirements calling for this type in other sizes, we would refer to our No. 13 Unispur Auger Bit, page 14, or to our No. 44 Short Unispur Auger Bit, Page 79.

Standard package,  $\frac{1}{2}$  dozen in box.

#### LIST PRICE AND WEIGHT PER DOZEN

Size in Sixteenths — Weight in Pounds

Size	Price	Weight
10	\$6.00	$2\frac{3}{4}$
11	7.00	$3\frac{1}{4}$
12	7.00	$3\frac{1}{2}$
13	8.25	$4\frac{1}{4}$
14	8.25	$4\frac{1}{2}$
15	9.50	5
16	9.50	$5\frac{1}{4}$



Tools for the Craftsman



### No. 21 Solid-Center Electricians' Auger Bit

This Electricians' Auger Bit is made with a  $5\frac{1}{2}$ -inch twist, an overall length of 10 inches, and has a single screw point for feeding eight turns to the inch. Solid-center twist gives ample strength and ability to clear chips. Standard package,  $\frac{1}{2}$  dozen in a box. Listed sizes in stock.

#### LIST PRICE AND WEIGHT PER DOZEN

*Size in Sixteenths — Weight in Pounds*

Size	Price	Weight
10	\$6.00	$2\frac{1}{2}$
11	7.00	3
12	7.00	$3\frac{1}{4}$



### No. 31 Double-Speed Electricians' Auger Bit

Electricians prefer our Double-Speed Auger Bit as it is the fastest boring and longest-lived tool on the market. It has a screw point which leads six turns to the inch or 25% faster than most electricians' bits, and the double-cutter head with two spurs provides maximum wear. Twist length is  $5\frac{1}{2}$  inches, overall length 10 inches. Standard package,  $\frac{1}{2}$  dozen in a box. Sizes listed in stock.

#### LIST PRICE AND WEIGHT PER DOZEN

*Size in Sixteenths — Weight in Pounds*

Size	Price	Weight
10	\$6.00	$2\frac{3}{4}$
11	7.00	$3\frac{1}{4}$
12	7.00	$3\frac{1}{2}$

Tools for the Craftsman



### No. 44 Short Unispur Auger Bit

This pattern of Auger Bit is made with a short twist and an overall length for plumbers' and electricians' use in boring holes for pipe and conduit. It is also supplied as equipment with the No. 750 Joist Borer described on page 88.

Sizes 1-inch and smaller have about 3-inch twist,  $5\frac{1}{2}$ -inch overall dimension, and larger sizes have a  $2\frac{1}{4}$ -inch twist with the same overall length. The smaller sizes have a medium-pitch screw point, and the larger sizes, to permit easier boring, are fitted with a finer point.

Sizes listed carried in stock. Standard package is six, in sizes  $1\frac{1}{4}$ -inch and under; three, in sizes over  $1\frac{1}{4}$ -inch.

#### LIST PRICE AND WEIGHT PER DOZEN

*Size in Sixteenths — Weight in Pounds*

Size	Price	Weight	Size	Price	Weight
8	\$5.00	$1\frac{1}{4}$	18	\$12.00	4
10	6.00	2	20	14.00	$4\frac{1}{2}$
11	7.00	$2\frac{1}{8}$	22	16.00	5
12	7.00	$2\frac{1}{4}$	24	18.00	$5\frac{1}{4}$
13	8.25	$2\frac{3}{8}$	28	22.00	6
14	8.25	$2\frac{1}{2}$	32	26.00	8
15	9.50	$2\frac{3}{4}$	36	52.00	9
16	9.50	3	40	56.00	10





Tools for the Craftsman



## No. 48 Bell Hangers' Drill

The Greenlee Bell Hangers' Drill, or Feeler Bit as it sometimes is referred to, is made with a twist length of  $3\frac{3}{4}$  inches and with overall length as listed below. A high-grade alloy steel is used in its manufacture, and in addition, the entire tool is heat-treated for added strength.

A high finish is given to the twisted section of the drill to provide proper chip clearance, and the edges are ground for relief to reduce friction with the wood. The cutting parts are easily kept in condition by grinding, and while designed for wood, will not be destroyed by encountering metal in work. A  $3/32$ -inch hole is drilled in the twist about an inch from the point, for convenience in pulling wire.

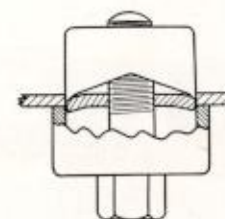
Standard package is  $1/2$  dozen in a box. Listed sizes in stock.

### LIST PRICE AND WEIGHT PER DOZEN

Size in Thirty-seconds — Weight in Pounds

Length	Size	Price	Weight	Size	Price	Weight
12-inch	6	\$ 7.50	$1\frac{1}{4}$	12	\$ 9.50	$2\frac{1}{8}$
18-inch	6	10.00	$1\frac{3}{4}$	12	12.00	3
24-inch	6	12.50	2	12	14.50	4
12-inch	8	8.00	$1\frac{5}{8}$	14	10.50	$2\frac{7}{8}$
18-inch	8	10.50	$2\frac{1}{2}$	14	13.00	$3\frac{3}{4}$
24-inch	8	13.00	$3\frac{3}{8}$	14	15.50	$5\frac{5}{8}$
12-inch	10	8.75	$1\frac{3}{4}$	16	12.00	4
18-inch	10	11.00	$2\frac{7}{8}$	16	14.50	$6\frac{1}{8}$
24-inch	10	13.50	$3\frac{5}{8}$	16	17.00	8

Tools for the Craftsman



## No. 730 Radio Chassis Punches

Greenlee Radio Chassis Punches are similar in design and operation to the Greenlee Knockout Punches described on the next page. This handy tool, driven by screw action, will quickly cut accurate, clean holes for sockets, plugs, and other receptacles in radio chassis. To use this punch a  $3/8$ -inch or  $13/32$ -inch hole must first be drilled so that a  $3/8$ -inch cap screw can be inserted.

Each size tool consists of the punch for cutting the metal, the die for supporting the metal, and the cap screw for providing the drive action. All parts are made of high-grade tool steel carefully heat-treated and ground for clearance. Each tool is individually packed in a tube container, and is furnished with complete operating instructions. Odd-sized holes for meters can be made with the No. 740 Cutter, described on page 85, equipped with special diameter discs.

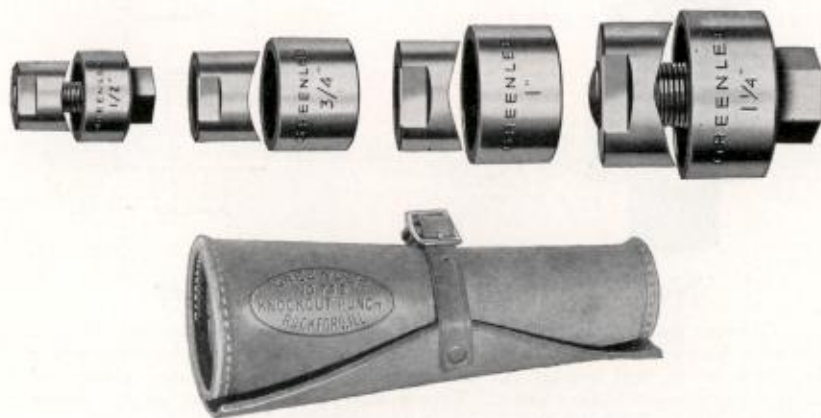
### LIST PRICE AND WEIGHT EACH

Weight in Pounds

	Price	Weight		Price	Weight
$3/4$ " Complete	\$2.15	$1/4$	$1\frac{1}{8}$ " Complete	\$2.50	$3/8$
AV113 Punch	1.25	$1/8$	AV115 Punch	1.45	$1/4$
AV114 Die	.65	$1/8$	AV116 Die	.80	$1/4$
$7/8$ " Complete	2.15	$3/8$	$1\frac{1}{4}$ " Complete	2.50	$3/4$
AV121 Punch	1.25	$1/8$	AV117 Punch	1.45	$1/4$
AV122 Die	.65	$1/8$	AV118 Die	.80	$3/8$
AV322 Screw for			$1\frac{3}{8}$ " Complete	2.85	$7/8$
$3/4$ " & $7/8$ "			AV119 Punch	1.65	$3/8$
Punches	.25	$1/8$	AV120 Die	.95	$3/8$
$1$ " Complete	2.35	$3/8$	$1\frac{1}{2}$ " Complete	3.20	1
AV87 Punch	1.35	$1/8$	AV89 Punch	1.90	$3/8$
AV88 Die	.75	$1/4$	AV90 Die	1.05	$1/2$
$1\frac{1}{8}$ " Complete	2.50	$5/8$	AV112 Screw for		
AV91 Punch	1.45	$1/4$	1" to $1\frac{1}{2}$ " in-		
AV92 Die	.80	$1/4$	clusive	.25	$1/8$
$1\frac{1}{4}$ " Complete	2.50	$5/8$	$2\frac{1}{4}$ " Complete	6.20	$2\frac{1}{4}$
AV83 Punch	1.45	$1/4$	AV437 Punch	3.20	$7/8$
AV84 Die	.80	$1/4$	AV438 Die	2.50	1
			AV304 Screw for		
			$2\frac{1}{4}$ " Punch	.50	$1/2$



## Tools for the Craftsman



### Nos. 735 and 737 Knockout Punches

Both of these Knockout Punch Sets were designed, primarily, for the electrical trade to permit the rapid and easy cutting of holes and the enlargement of knock-outs in metal boxes and cabinets, having a wall thickness up to  $\frac{1}{8}$ -inch or 10 gauge. The operation, which consists of forcing a two-point punch into a die by screw action, can be done in about one minute. The result is a clean-cut hole of proper size to fit the conduit, eliminating all reaming and filing. An ordinary wrench will drive all units, which makes it possible to handle work in the most inaccessible locations. These tools are also used for automobile work, cutting holes for heater pipes and other accessories.

The No. 735 has four punches for cutting  $\frac{7}{8}$ , 1  $\frac{3}{32}$ , 1  $\frac{11}{32}$  and 1  $\frac{11}{16}$ -inch holes for  $\frac{1}{2}$ ,  $\frac{3}{4}$ , 1 and  $1\frac{1}{4}$ -inch conduit. The No. 737 has two units for punching holes 1  $\frac{15}{16}$  and 2  $\frac{3}{8}$ -inch diameter for  $1\frac{1}{2}$  and 2-inch conduit. The  $\frac{7}{8}$ -inch punch for  $\frac{1}{2}$ -inch conduit will cut a hole where no standard knockout is provided. This size is driven by a  $\frac{3}{8}$ -inch cap screw, and to use this size, a  $\frac{3}{8}$ -inch hole must first be drilled in the box. The larger sizes are driven by  $\frac{3}{4}$ -inch cap screws, which will pass through the  $\frac{7}{8}$ -inch hole, cut by the small punch, or through standard knockouts.

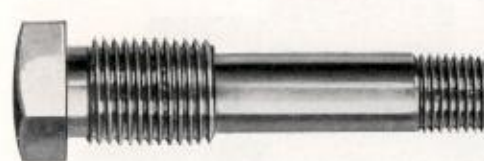
Both sets are packed in leather cases.

#### LIST PRICE AND WEIGHT EACH

*Weight in Pounds*

	Price	Weight
No. 735 KNOCKOUT PUNCH SET (for $\frac{1}{2}$ ", $\frac{3}{4}$ ", 1" and $1\frac{1}{4}$ " conduit) .....	\$10.00	2 $\frac{3}{4}$
No. 737 KNOCKOUT PUNCH SET (for $1\frac{1}{2}$ " and 2" conduit) .....	10.00	4 $\frac{1}{4}$

## Tools for the Craftsman



NO. 1387AV DRIVE SCREW



NO. 1388AV DRIVE NUT

### Improved Drive Arrangement For $\frac{1}{2}$ -inch Knockout Punch

Patent 2,221,904

To increase the length of service of the  $\frac{1}{2}$ -inch Greenlee Knockout Punch in cutting  $\frac{7}{8}$ -inch holes in the heavier-gauge sheet metals, we offer the new No. 1387AV Drive Screw and No. 1388AV Drive Nut, as illustrated above. This supplementary driving arrangement will fit the standard No. AV121 Punch and No. AV122 Die for  $\frac{1}{2}$ -inch conduit, as furnished with our No. 735 set, and it takes the place of the No. AV322  $\frac{3}{8}$ -inch Cap Screw.

The No. 1387AV Drive Screw has a small diameter of  $\frac{3}{8}$ -inch, threaded to fit the standard No. AV121 Punch, and a large diameter of  $\frac{1}{2}$ -inch with No. 20 U. S. Standard thread to fit the No. 1388AV Drive Nut. The  $\frac{3}{8}$ -inch threaded section of the screw merely holds the punch in place, and the actual drive is made by turning the 1-inch hexagon nut on the  $\frac{1}{2}$ -inch threaded section.

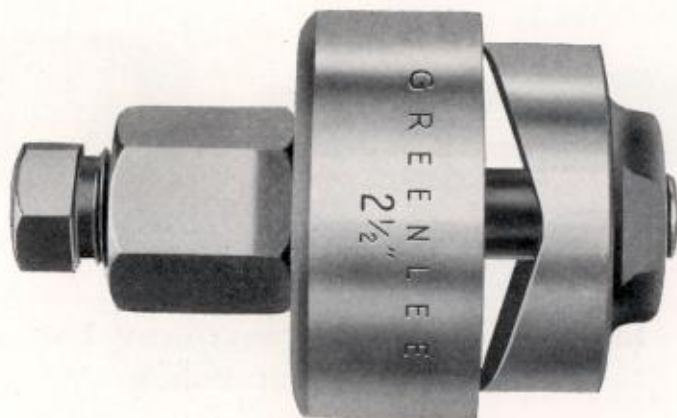
The advantages resulting from this arrangement are that the No. 20 thread increases the speed of cutting and that the heavier thread is better able to resist the wearing action of the nut, when it is turned against the thrust of heavy punching. Both the Drive Screw and Drive Nut are made from a high-grade tool steel and are properly heat treated. They are guaranteed to handle the punching of sheet metal up to and including 10 gauge thickness.

#### LIST PRICE AND WEIGHT EACH

*Weight in Pounds*

	Price	Weight
No. 1387AV Drive Screw	\$ .75	$\frac{1}{8}$
No. 1388AV Drive Nut	.35	$\frac{1}{4}$



**Nos. 738 and 739 Knockout Punches**

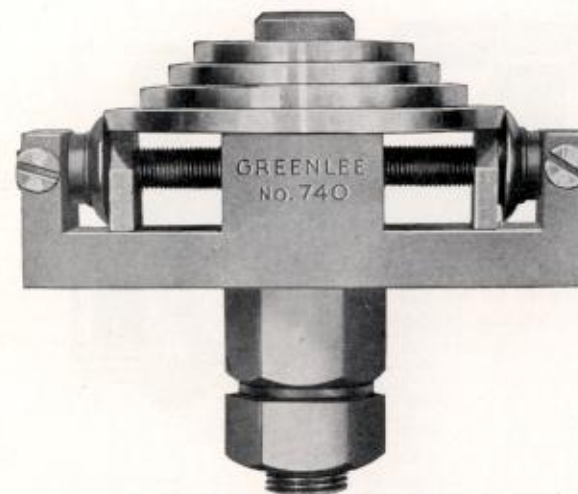
Due to the popularity of the Knockout Punches in sizes up to 2-inch and to the demand developing recently, we have added two additional sizes, designated by Nos. 738 and 739, to cut holes  $2\frac{7}{8}$  and  $3\frac{1}{2}$ -inch diameter for  $2\frac{1}{2}$  and 3-inch conduit respectively. They are packed and sold individually.

The design follows the small sizes in that a two-point punch pierces the metal, and a die is employed as a support to prevent distortion. These large sizes are driven by means of a double-diameter screw and nut. The small section of the screw is  $\frac{3}{4}$ -inch diameter, threaded to fit the hole in the punches, and the large diameter is 1-inch with No. 12 thread to fit the  $1\frac{1}{2}$ -inch diameter Drive Nut. The  $\frac{3}{4}$ -inch section only holds the punch in place, and the actual drive is made by turning the drive nut on the 1-inch threaded part.

Their operation is the same as the small sizes, in that the punch should be screwed onto the drive screw on the inside of the box or cabinet, supported by the die on the outside. The screw will pass through any standard knockout or through a hole cut by the  $\frac{1}{2}$ -inch unit of the No. 735 Set. Guaranteed to cut through sheet metal 10 gauge or lighter.

**LIST PRICE AND WEIGHT EACH***Weight in Pounds*

	Price	Weight
No. 738 for $2\frac{1}{2}$ -inch Conduit	\$14.00	$5\frac{3}{4}$
No. 739 for 3-inch Conduit	19.00	$7\frac{1}{4}$

**No. 740 Knockout Cutter**

This is a companion tool to the Knockout Punches described on page 82, as it will handle the enlargement of knockouts to accommodate  $1\frac{1}{2}$ , 2,  $2\frac{1}{2}$  and 3-inch conduit. It will cut material up to  $\frac{1}{8}$ -inch or 10 gauge thickness, and the operation can be performed in about  $1\frac{1}{2}$  minutes. The hole that is enlarged is left clean and round and it is not necessary to file or ream the edges smooth. The tool is hand driven, and any ordinary wrench can be used.

The operation of the tool is simple. The cutting is done by the drive action of two wheel cutters, mounted on a horizontal shaft in the body. The hexagon nut, adjacent to the body, revolves the tool, while the other nut is used for feeding the cutters into the metal. The discs, which are  $1\frac{1}{8}$ ,  $2\frac{3}{8}$ ,  $2\frac{7}{8}$  and  $3\frac{1}{2}$ -inch diameter for the above sizes of conduit, support the metal from the side opposite the cutters, the cutters moving in a circle in line with the circumference of the top supporting disc. The center shaft of the tool is  $\frac{3}{4}$ -inch diameter for passing through standard knockouts.

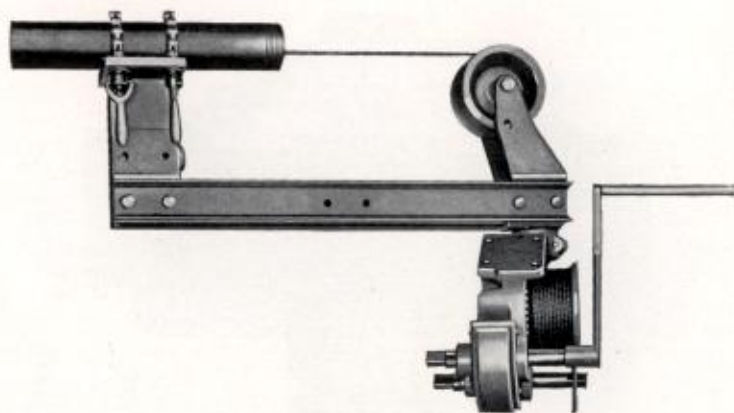
Odd sizes of holes,  $1\frac{1}{8}$  to  $3\frac{1}{2}$ -inch, can be cut with this tool by equipping it with discs of desired diameter and adjusting the wheel cutters to suit.

Tool packed in leather case.

**LIST PRICE AND WEIGHT EACH***Weight in Pounds*

	Price	Weight
No. 740 KNOCKOUT CUTTER (for $1\frac{1}{2}$ ", 2", $2\frac{1}{2}$ " and 3" conduit) .....	\$15.00	$4\frac{1}{2}$



**No. 765 Cable Puller**

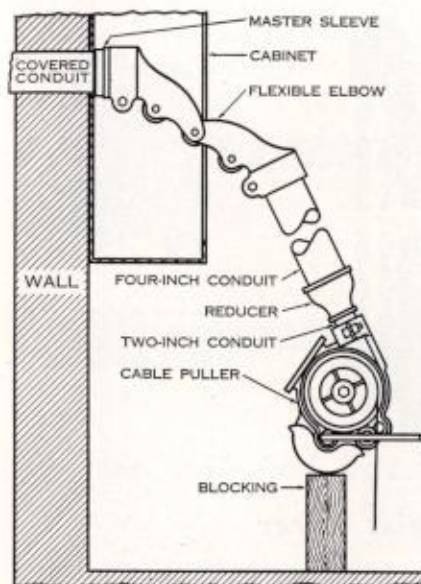
Patent 2,221,903

Cable pulling has always presented difficulties to the electrician, due to the cumbersome, heavy equipment that has been employed and to the trouble of properly anchoring such equipment. The new Greenlee No. 765 Cable Puller has been designed to provide maximum power, ease of operation, portability, and convenient, positive anchorage.

The machine will exert a maximum pull of 7500 pounds, and it has two speeds, through a direct gear and through a back gear. A shear pin is provided in the back gear shaft to eliminate damage under an excessive pull, and a dog on the back gear prevents unwinding of the cable in the event of pin shearing. The 15/16-inch square drive shafts extend from both sides of the machine for either one or two operators. Two cranks are supplied for hand operation or, if preferred, ratchet wrenches can be used. The machine can also be driven by a portable electric power unit.

The complete machine has a net weight of 170 pounds, making it readily portable, either by auto or truck. For further convenience in transporting or making set-ups, the tension drum, weighing 85 pounds, can be disconnected from the roller bracket extension.

The clamping device consists of two lengths of pipe-wrench chain, tightening by means of two clamp nuts, and will accommodate conduit in sizes 2-inch to 5-inch. Clamping is done directly onto conduit through which cable is to be pulled, and this allows pulling in line with the conduit, preventing the loosening of hangers. Above illustration shows the machine attached to an end of a section of conduit.



The 6½-inch-diameter tension drum connects to an extension on the roller bracket where it can be swiveled in a complete circle to provide operating clearance for the cranks. The gears in this drum are of cut steel, and cast parts are semi-steel. A base is provided on the drum for attaching to a plank by means of bolts, in which case the standard clamping device would not be employed, and the drum would then be operated as an ordinary winch. The roller bracket is also semi-steel casting, and it has two roller positions, the top position for deep boxes and the lower for shallow boxes. The roller is 5 inches in diameter with a width of 5 inches to clear basket connection and electric cable if necessary.

The frame is formed from two 36-inch sections of 3-inch 5-pound channel iron, which in most cases will allow sufficient cable to be pulled from the conduit or into the box. In the event a longer length of electric cable is required for a connection, a conduit extension can be added to the line and later removed, or longer frames can be made or purchased.

For concealed work where the standard clamping device cannot be used, a Flexible Elbow Attachment can be furnished, which makes it convenient to use the Puller without the frame, and makes it possible to place the Puller at any desired distance from the end of the conduit. This attachment, shown set up in the sketch above, consists of a flexible elbow, a 4-inch master sleeve, bushings for 2, 2½, 3, and 3½-inch conduit, two unions for the small bushings, and a 4 to 2-inch reducer. The pieces of 2 and 4-inch conduit between the flexible elbow and the puller are furnished by the user.

Cable is not furnished with the machine, but we recommend ⅜-inch 6-19 strand having a breaking strength of 11,000 pounds or higher.

**LIST PRICE AND WEIGHT EACH***Weight in Pounds*

	Price	Weight
No. 765 Cable Puller with two cranks but without cable	\$160.00	225
Flexible Elbow Attachment complete	40.00	86





## Tools for the Craftsman



### No. 750 Joist Borer

Designed for easy operation, large range and simple assembly, the Greenlee No. 750 Ball-Bearing Joist Borer makes the electrician's job easier in knob and tube wiring or when boring holes for conduit.

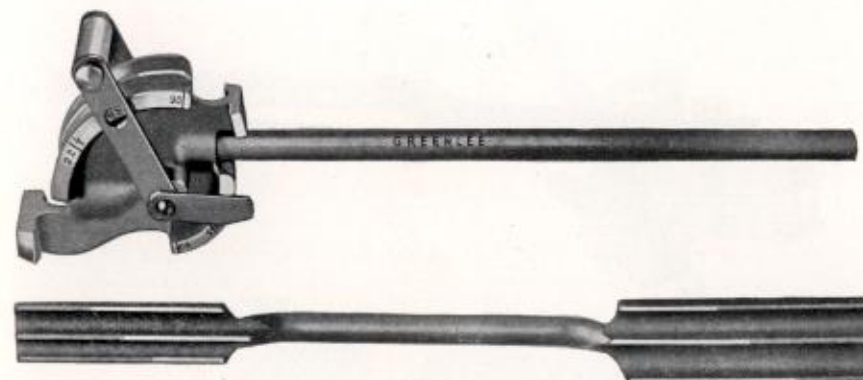
The following outstanding and exclusive improvements are found on this borer: The range of boring is increased, because the self-centering chuck is strong enough to drive bits up to 1 1/4-inch and is sturdy enough to stand the hardest use. It has a machined square hole for the bit, assuring positive drive at all times. The spindle runs in ball bearings, packed in grease, which eliminates friction and provides long life. Instead of square links for the chain, round ones are used, affording a smooth surface for the operator's hand. There is a guard over the idle pulley to protect the operator's hand, and a foot rest is provided for supporting the frame on the floor.

This machine is designed for assembly on two sections of 1/2-inch conduit, which simplifies handling and cuts down shipping weight to a minimum. All parts are packed in a box 3 3/4" x 4 3/4" x 7 3/4", and necessary instructions for assembly are printed on top of each box. One 11/16-inch No. 44 Short Unispur Auger Bit is furnished as equipment with each machine.

#### LIST PRICE AND WEIGHT EACH

	Weight in Pounds	
	Price	Weight
No. 750 Joist Borer	\$20.00	13

## Tools for the Craftsman



### Nos. 760 and 762 Copper Tube Benders

Patent 2,232,819

The Greenlee Nos. 760 and 762 Benders were developed to meet the demand for a simple method of bending copper tubing by hand as required in the plumbing, refrigeration, and air-conditioning fields.

The No. 760, shown above, will bend 3/8 and 1/2-inch O. D. soft tubing on a radius of 1 1/2 inches, and 3/8 and 3/4-inch tubing on a radius of 2 1/2 inches. The body of this lightweight tool is made of aluminum alloy, and the follow bar, connecting bars, roller, pins, and lever are made of steel. The handle is 15 inches long and is made of 3/8-inch pipe stock.

The No. 762 will bend 5/8 and 7/8-inch O. D. soft tubing on a 3-inch radius, and 1 and 1 1/8-inch tubing on a radius of 4 inches. The body is made of aluminum alloy, and the follow bar is made of malleable grooved sections with a 30-inch section of pipe threaded to fit in one end. The tool handle is also made from a 30-inch section of pipe and screwed in the body. The balance of the parts are of steel. Two steel hooks are used on this tool to grip the tubing instead of the aluminum lugs used on the No. 760.

Ample leverage for easy bending is provided on both tools by the extra long follow bars. Kinking and distortion of the tube is eliminated, because the follow bar is held tight against the roller and adjusted by a lever attached to the center eccentric pin.

Each tool is individually boxed, with complete operating instructions supplied.

#### LIST PRICE AND WEIGHT EACH

	Weight in Pounds	
	Price	Weight
No. 760 Copper Tube Bender	\$15.00	5
No. 762 Copper Tube Bender	26.00	11



## No. 763 Steel Tube Benders

Greenlee Steel Tube Benders were developed to bend steel tubing without kinking and flattening of the tube, a trouble usually encountered in tube bending. Six sizes of benders are available for bending tubing with outside diameters of  $\frac{1}{4}$ ,  $\frac{3}{8}$ ,  $\frac{1}{2}$ ,  $\frac{3}{4}$ ,  $\frac{5}{8}$ , and  $\frac{3}{4}$ -inch. All will make smooth, even bends to a center-line radius of two and one-half times the outside diameter.

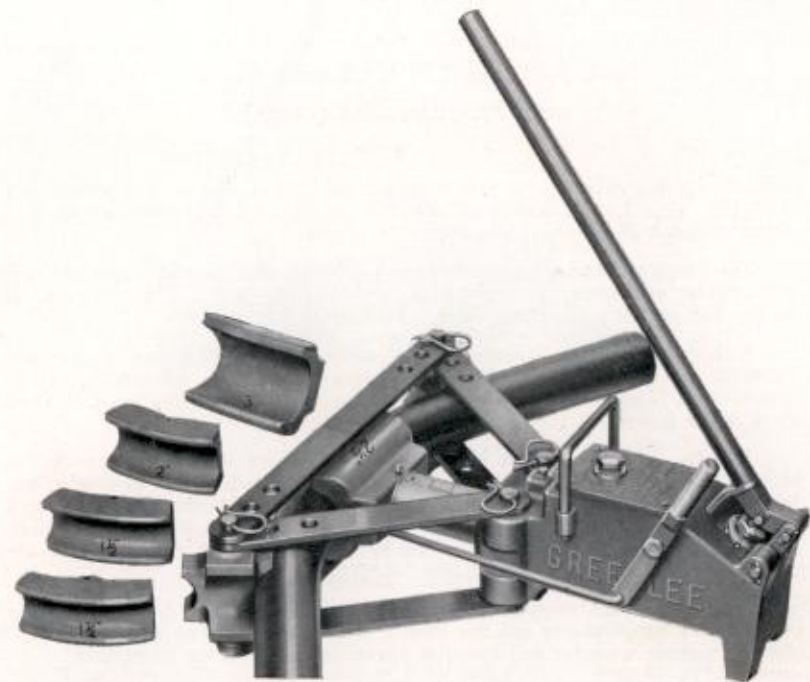
The tool is clamped in a vise for bending large sizes of tubing, and can also be used without the vise for bending small tubing. An eccentric shaft, easily operated by a small lever, keeps a pressure roller tight against the follow bar, providing a snug fit and support for the tube in the bending operation. The tube is held securely in position by a clamp which prevents slipping. The bending is done by an easy rolling action, not sliding, which eliminates friction, leaving the finish of the tube smooth and unmarred.

The follow bar, connecting bars, roller, clamp, shafts, and eccentric lever are all made from a high-grade steel, properly heat-treated. The head or bending die on each bender has been milled to the correct radius with an accurately shaped groove for bending up to and including  $180^\circ$ .

### LIST PRICE AND WEIGHT EACH

*Weight in Pounds*

Size OD of Tubing	Radius	List	Weight
$\frac{1}{4}$ "	$\frac{5}{8}$ "	\$10.00	$3\frac{1}{4}$
$\frac{3}{8}$ "	$\frac{3}{4}$ "	10.00	4
$\frac{1}{2}$ "	$1\frac{1}{8}$ "	11.00	$4\frac{1}{2}$
$\frac{3}{4}$ "	$1\frac{1}{4}$ "	12.00	$5\frac{1}{4}$
$\frac{5}{8}$ "	$1\frac{3}{8}$ "	14.00	$6\frac{1}{2}$
$\frac{3}{4}$ "	$1\frac{7}{8}$ "	17.50	$10\frac{1}{2}$



## Nos. 770 and 775 Hydraulic Conduit and Pipe Benders

Patent 1,964,550

Greenlee Hydraulic Benders have been developed to lower labor and material costs on all bending jobs large or small. These benders have been made simple and easy for one man to operate, are easily portable, and can be conveniently carried to the job.

Hydraulic pressure is applied to the ram by simply pumping the handle. To release the pressure, the handle is forced to its lowest position, after the stop block has been turned out of the way by rotating the handle through 90 degrees. The handle is then put on the return attachment lever for moving the ram in either direction.

To make the job of bending conduit easier and faster, two different sizes of hydraulic power units have been developed. The No. 770 Bender has a





## Nos. 770 and 775 Hydraulic Conduit and Pipe Benders (cont.)

maximum piston pressure of 50,000 pounds and, with regular equipment, will bend 1¼, 1½, 2, 2½, and 3-inch conduit or pipe. This bender weighs 118 pounds without the shoes, which weigh 48 pounds.

The No. 775 Bender has a maximum piston pressure of 80,000 pounds and, with regular equipment, will bend 3, 3½, 4, and 4½-inch conduit or pipe. It weighs 214 pounds without the shoes, which weigh 106 pounds.

Each power unit is equipped with a safety valve to blow out at pressures exceeding the capacity of the unit. All bending can be done without the use of heat or filler. The tool is sturdily built into one unit and will not move or twist about when in use.

The No. 775 Bender can be furnished with extra shoes and supports for bending 8 sizes of pipe from 1¼ to 4½-inch. These attachments will give in one bender the range of both the regular No. 770 and No. 775, but the power unit required to bend the larger conduit is necessarily slower on small conduit. However, these attachments can be used by the customer who only occasionally needs to bend the smaller conduit.

The benders are shipped in a handy wooden box with handles for easy carrying and compartments for the shoes. Each bender is equipped with open-end and spanner wrenches and complete operating and servicing instructions.

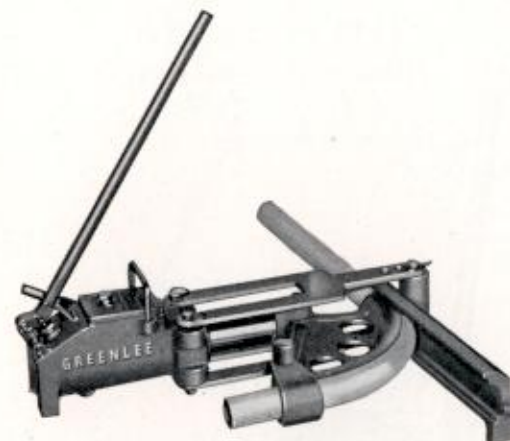
### LIST PRICE AND WEIGHT EACH

*Weight in Pounds*

	Price	Weight
No. 770 for 1¼ to 3-inch	\$170.00	198
No. 775 for 3 to 4½-inch	235.00	370

### EXTRA ATTACHMENTS FOR NO. 775

AA996 Support Castings for 1¼" to 2½" (two required)	7.00	8½
AA453 Shoe for 1¼"	4.00	6
AA454 Shoe for 1½"	5.00	6
AA455 Shoe for 2"	6.00	8¼
AA456 Shoe for 2½"	8.00	14¼



## No. 770-T Hydraulic Thin-Wall Conduit Bender

Patent 1,964,550

When the No. 770 power unit is furnished with attachments for bending thin-wall electric metallic tubing, it is designated by No. 770-T. This machine is the solution to the problem of how to bend conduit of this type quickly and without crushing. The design is such that a full 90-degree bend can be made by one complete forward movement of the ram.

As the above illustration shows, the conduit is supported by a formed follow bar, which moves with the conduit while it is being bent, and a formed shoe is pivoted off center on the ram, causing it to rotate and thus bend the conduit without a kink. Regular attachments supplied will handle sizes 1¼, 1½ and 2-inch. Any No. 770 Bender now in use can be equipped for thin-wall electric metallic tubing by purchasing the set of attachments, which are easily and quickly applied.

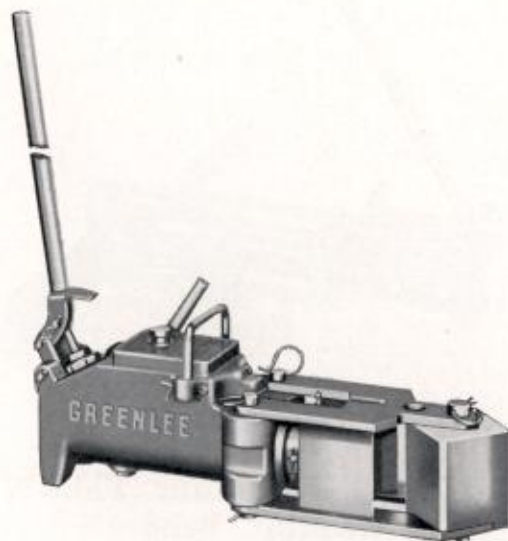
### LIST PRICE AND WEIGHT EACH

*Weight in Pounds*

	Price	Weight
No. 770-T	\$230.00	266
Attachments only	120.00	190



*Tools for the Craftsman*



### No. 770-BB Hydraulic Bus-Bar Bender

The Greenlee Hydraulic Bus-Bar Bender has been developed to bend bus bars up to 4 inches wide and  $\frac{3}{4}$  inches thick, easily and quickly. With this Bender it is now possible to make accurate U-bends of any size, ranging upward from the small "U" with a  $3\frac{1}{2}$ -inch inside width.

The Bus-Bar Bending attachment has been made to fit the power unit of the regular Greenlee No. 770 and No. 770-T Benders, and can be purchased as a separate attachment for the power unit or as a complete Bus-Bar Bender with power unit and attachment together.

#### LIST PRICE AND WEIGHT EACH

*Weight in Pounds*

	Price	Weight
No. 770-BB Bender Complete with Power Unit	\$140.00	155
Bus-Bar Bending Attachments only	30.00	55

*Tools for the Craftsman*



### ATTACHMENTS For Greenlee Hydraulic Units



### I.P.S. Radius-Shoe Attachment

The I. P. S. Radius-Shoe Attachments, used only on the No. 770 Power Unit, are designed for making a full 90° bend in I. P. S. conduit from  $\frac{3}{4}$  to 2-inch, with one forward movement of the ram. These attachments are similar to those used on the No. 770-T Bender for E. M. T. material. The conduit is supported by a formed follow bar which moves with the conduit during the bending operation. A formed shoe is pivoted off center on the ram, causing it to rotate and pull the conduit around with it, making a smooth, round bend without shifting the conduit.

#### LIST PRICE AND WEIGHT EACH

*Weight in Pounds*

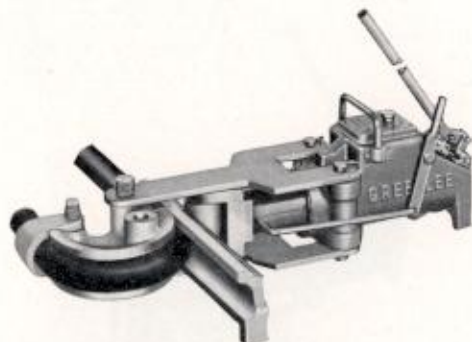
	Price	Weight
Yoke Pin	\$ 1.50	2
Yoke for All Sizes	7.00	5 $\frac{1}{4}$
Roller	4.00	6 $\frac{1}{4}$
Roller Pin	1.00	2 $\frac{1}{2}$
Saddle Pin for $\frac{3}{4}$ " to 1 $\frac{1}{4}$ " inclusive	2.00	1 $\frac{1}{2}$
Saddle Pin for 1 $\frac{1}{2}$ " to 2"	2.25	1 $\frac{1}{4}$
Connecting Bars (two required)	7.00	8
Radius Shoe, Follow Bar, & Saddle for $\frac{3}{4}$ " complete	25.00	21
Radius Shoe, Follow Bar, & Saddle for 1" complete	28.00	26
Radius Shoe, Follow Bar, & Saddle for 1 $\frac{1}{4}$ " complete	32.25	43
Radius Shoe, Follow Bar, & Saddle for 1 $\frac{1}{2}$ " complete	38.50	48
Radius Shoe, Follow Bar, & Saddle for 2" complete	45.00	63
No. 770 Power Unit Complete	110.00	98





## Tools for the Craftsman

### Attachments (cont.)



### 180° Attachments

Attachments for the No. 770 Power Unit can be furnished for making 180° bends in rigid conduit and pipe. These attachments are made in sizes for pipe up to 2-inch. Each size consists of a radius shoe, a saddle for holding the pipe tightly in position, and a follow bar to support and bend the pipe. A roller on the end of the ram forces the radius shoe, which is off center, around to a 90° bend. The shoe is then changed to a new position and forced around another 90°, giving an accurate 180° bend. Prices quoted on application.



### Motor Drive for All Units

Both the Greenlee No. 770 and No. 775 Benders can be equipped with a motor drive attachment. A 1½-H. P. motor with a speed reducer, giving approximately 200 or 250 strokes per minute, can be furnished. Prices quoted on application.

## Tools for the Craftsman



### No. 99 Underground Auger

This type of auger, as its name denotes, is designed for tunneling underground for pipe and conduit. The tool is made with double twist approximately 14 inches in length, and the edges of the twist are ground thin to provide ample room for earth and to lessen the weight. The lead section, 3 inches long, for assisting the feeding of the auger, is also double twisted, tapering from 7/8 to 3/8-inch.

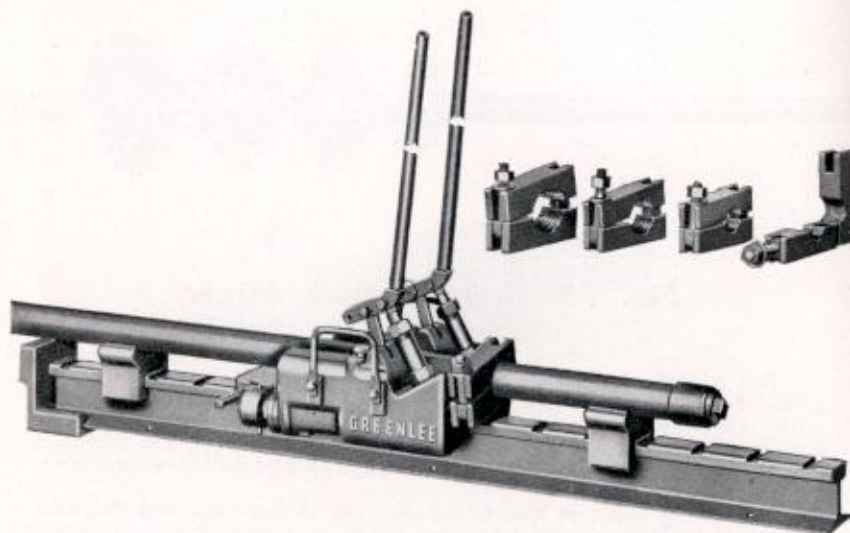
The shaft is heavy, in keeping with the size of the auger, and the shank is threaded to fit pipe couplings. Thus the auger can be lengthened to suit requirements. A high-grade steel is used in its manufacture, and proper heat-treatment is given. Hollows of the twist are japanned, edges polished. Overall length is 36 inches.

Augers are individually packed. Sizes listed are in stock.

### LIST PRICE AND WEIGHT EACH

Weight in Pounds

Size	Price	Weight
1"	\$ 6.00	2 1/4
1 1/4"	6.50	2 3/4
1 1/2"	7.00	3 1/4
1 3/4"	7.50	3 3/4
2"	10.00	4 1/2
2 1/4"	10.50	5
2 1/2"	11.00	5 5/8
2 3/4"	11.50	6 1/4
3"	13.00	7 1/8
3 1/4"	15.00	8 1/4
3 1/2"	17.00	9 1/4
3 3/4"	19.00	10 1/4
4"	25.00	11 1/4
4 1/2"	35.00	17
6"	60.00	30

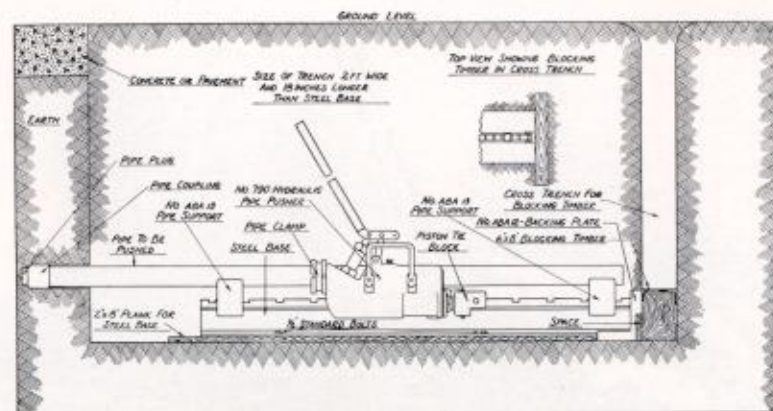


## No. 790 Hydraulic Pipe Pusher

Patents 1,962,228—2,080,104

The Greenlee Hydraulic Pusher was designed to install pipe underground without the expense of digging long trenches, tearing up lawns, breaking through concrete, backfilling, and tamping. The Greenlee requires only a short trench to accommodate the pusher with a section of pipe, and only one or two men to develop the pressure by pumping the handles.

The No. 790 Hydraulic Pusher has capacity for pipe from 1 1/4 to 4-inch size, with special clamps available for 3/4 and 1-inch pipe. The pusher consists of a hydraulic unit with six operating speeds for varying soil conditions, giving pushing pressures ranging from 6,500 to 40,000 pounds. As the pressure is applied by pumping the handles, the unit moves forward on a notched steel base against the pipe clamp, forcing the pipe through the ground. After a movement of 4 inches, the pawl on the body drops into a notch to hold it while pressure is released by depressing one or both handles. The heavy springs within the body return the pistons to a new starting position, and the operation is repeated until the end of the base is reached, it then being necessary to push the machine to the opposite end of the base and reset the pipe clamp. The steel base can be supplied in 5 1/2, 6 1/2, 7 1/2, and 8 1/2-foot lengths, permitting pushes of from 4 to 7 feet between pipe clamp changes. Each base is equipped with one backing plate and two pipe supports.



CROSS SECTION SHOWING TRENCHING AND BLOCKING REQUIRED FOR PUSHER

The clamps are of the hinged type, assembled to prevent loss of parts. The grooved bore, which is off center to provide greater leverage, will hold against any pressure which can be developed by the power unit. A clamp can be reset in about a minute, as only one hexagon nut must be loosened. The power unit is equipped with a safety valve to blow out at pressures exceeding the capacity of the pusher.

The machine has been built compactly into one unit, with all working parts fully covered. Weighing only 140 pounds, exclusive of the base, it can be easily handled and set up. A cross section view of the trenching and blocking necessary is shown above. By reversing the power unit on the base and by blocking the opposite end, the machine can be used for pulling.

Pilots for various sizes of pipe are not carried in stock as an accessory, but the use of pipe reducers and pipe plugs is recommended.

The new Greenlee No. 796 Power Pump for driving Greenlee Pushers, described on page 101, can be easily attached to the No. 790 Pusher.

## LIST PRICE AND WEIGHT EACH

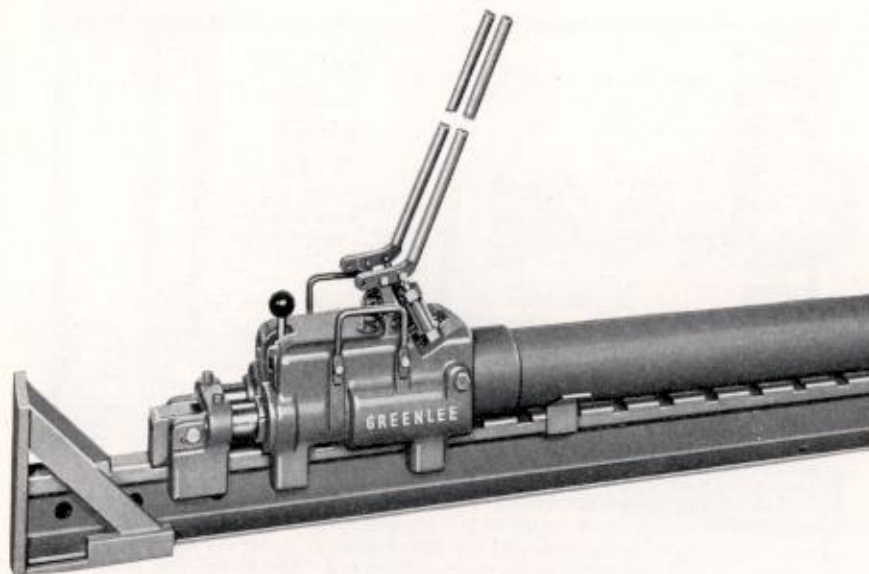
Weight in Pounds

	Price	Weight
No. 790 Power Unit only	\$185.00	160
5 1/2 ft. Base and equipment	30.00	145
6 1/2 ft. Base and equipment	35.00	165
7 1/2 ft. Base and equipment	40.00	185
8 1/2 ft. Base and equipment	45.00	205
1 1/4-inch Quick-Acting Clamp	10.00	10
1 1/2-inch Quick-Acting Clamp	10.75	10
2-inch Quick-Acting Clamp	11.50	10
2 1/2-inch Quick-Acting Clamp	12.75	11
3-inch Quick-Acting Clamp	15.00	16
3 1/2-inch Quick-Acting Clamp	17.50	16
4-inch Quick-Acting Clamp	22.50	18





*Tools for the Craftsman*



## No. 795 Hydraulic Pipe Pusher

Patents 1,962,228—2,080,104

This 75-ton pipe pusher was designed to handle large drainage ducts, concrete sewer pipe, and pipe beyond 4-inch. Pipe is pushed from the end of the power unit, making pipe clamps unnecessary.

This pusher with six operating speeds will develop pushing pressures ranging from 25,000 to 150,000 pounds. Pipe up to 6-inch is usually pushed with a closed end, using reducers. Larger sizes are pushed open, and the soil is removed through the pipe by means of a scoop and sewer rods. When pushing large drainage ducts, two machines can be used.

The power unit is mounted on 90-pound steel rail and this can be purchased in lengths to suit the pipe or duct to be handled. The base used should be about 3 feet longer than the section of pipe to be pushed.

The operating principle of this machine is the same as our No. 790, described on pages 98 and 99, except that clamps are eliminated.

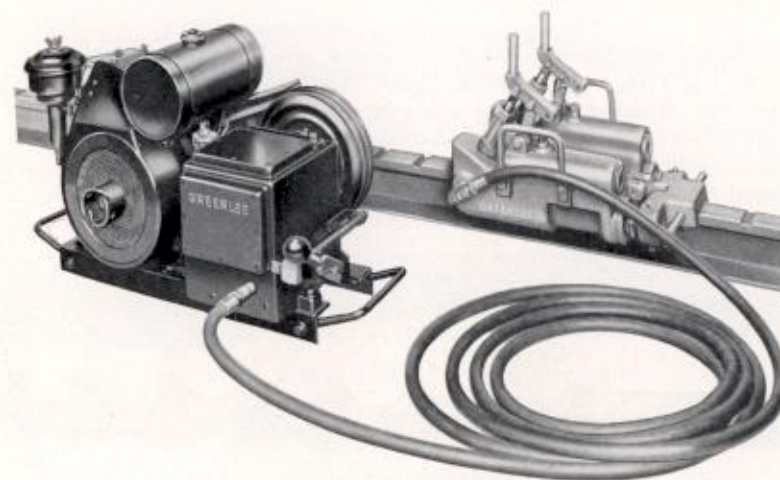
For power driving of this pusher see next page.

### LIST PRICE AND WEIGHT EACH

*Weight in Pounds*

	Price	Weight
No. 795 Power Unit only	\$325.00	280
Base and equipment	10.00 per foot	30 per foot

*Tools for the Craftsman*



## No. 796 Power Pump

The Greenlee No. 796 Motor-Driven Reciprocating Pump was designed for driving all Greenlee Hydraulic Units. This power pump, shown here attached to the Greenlee No. 790 Pusher is driven by a 1 $\frac{3}{4}$ -H. P. gasoline motor with a double V-belt drive.

The pump forces oil through a 25-foot high-pressure hose to the hydraulic power unit and into the cylinders which force the power unit forward on the base. The spring control lever regulates the flow of oil to the power unit. The operator watches the progress of the machine and shuts off the pressure when the body pawl reaches the next notch on the base, thus permitting the tie block to be drawn up to the next operating position. He then needs only to shift the lever and hold it in position, and the machine is forced forward again. With this new Power Pump attached to either the Greenlee No. 790 or No. 795 Pusher, the toughest pushing job in the most difficult soil can be easily made with only one man needed to operate the machine.

The pump can be purchased without motor equipment, or it can be fitted with any type of power unit desired.

### LIST PRICE AND WEIGHT EACH

*Weight in Pounds*

	Price	Weight
Complete Motor-Driven No. 796 Power Pump only	\$325.00	180
No. 796 Pump Without Motor	245.00	100



## *Tools for the Craftsman*

The Greenlee Line also includes a complete selection of Boring, Mortising, and Routing Tools for machine use. A few of the more popular items are illustrated here. A separate catalog is published with detailed information about the complete line of Standard Boring, Mortising and Routing Tools, and with many valuable suggestions of special purpose tools that have been, and can be, developed to meet the individual needs of any customer with a special job to do. A copy of the latest catalog will be furnished upon request.



NO. 150 DOUBLE-SPUR MACHINE BIT



NO. 177 SPUR MACHINE DRILL



NO. 164 SCREW-SHANK DOWEL BIT

## *Tools for the Craftsman*



NO. 195 SPLIT-SHANK COUNTERSINK WITH DRILL



NO. 101-B REGULAR HOLLOW CHISEL



NO. 120-B REGULAR HOLLOW CHISEL BIT



NO. 149 MULTI-SPUR MACHINE BIT





## Index

	Page
Accessories, Screw Driver and Push Drill .....	7
Attachments, Hydraulic Bender .....	95-96
Auger Bit Details .....	11-43
Auger Bits .....	
Dowel .....	22-23
Electricians' .....	77-78-79
Extension-Lip .....	12
Ship .....	20
Single-Twist .....	17
Solid-Center .....	13-16-72-78
Unispur .....	14-16-77-79
Utility .....	15
Auger Bit Set Lists .....	19
Auger Bit Set Packages .....	18
Augers .....	
Boring Machine .....	36
Derrick .....	38
Earth .....	39-97
Nut .....	37
Rafting .....	41
Ring .....	40
Ship .....	28-32-33-34-35
Steam Fitters' .....	39
Underground .....	97
Automatic Push Drills .....	6
Bell Hangers' Drills .....	80
Bender Attachments, Hydraulic .....	95-96
Bender, Bus-Bar .....	94
Benders, Copper Tube .....	89
Benders, Hydraulic .....	91-92-93-94
Benders, Steel Tube .....	90
Bit Extensions .....	76
Bits, Car .....	24 to 31
Bits, Screw Driver .....	7-42
Boring Machine Augers .....	36
Brace Countersinks .....	42
Brace Drills .....	21
Brace Reamers .....	42
Bus-Bar Bender .....	94



	Page
Cable Puller .....	86-87
Car Bits .....	24- to 31
Chisel Handles .....	71
Chisels .....	
Glaziers' .....	57
Short Socket Firmer .....	46-73
Socket Butt .....	45-73
Socket Corner .....	56
Socket Firmer .....	47-48-49-73
Socket Framing .....	54-55
Tang Butt .....	60
Tang Firmer .....	61
Tree Surgeons' .....	52
Turning .....	62 to 64
Chisel Sets .....	50-51
Copper Tube Benders .....	89
Countersinks for Brace .....	42
Derrick Augers .....	38
Double-Speed Electricians' Auger Bits .....	78
Dowel Auger Bits .....	22-23
Draw Knives .....	
Folding-Handle .....	70
Peeling .....	68-69
Razor Blade .....	67-74
Stripping .....	68-69
Drills .....	21-80
Earth Augers .....	39-97
Electricians' Auger Bits .....	77-78-79
Expansive Bits .....	8-9-10-74
Extension-Lip Auger Bits .....	12
Extension-Lip Car Bits .....	25
Extension-Lip Dowel Bits .....	22-23
Extra Heavy Stripping Knives .....	69
Extra-Length Ship Augers .....	28-34-35
Folding-Handle Draw Knives .....	70
Glaziers' Chisels .....	57
Gouges .....	
Socket Firmer .....	58-59
Tree Surgeons' .....	53





## Tools for the Craftsman

	Page
Turning .....	62-65
Handles for Chisels and Gouges .....	71
Heavy Stripping Knives .....	68
Hydraulic Conduit and Pipe Bending Machines .....	91-92-93-94
Hydraulic Pipe Pushers .....	98-99-100
Jaxon Auger Bits .....	72
Jaxon Chisels .....	73
Jaxon Draw Knives .....	74
Jaxon Expansive Bits .....	74
Joist Borer .....	88
Knives, Draw .....	67 to 70-74
Knockout Punches .....	82-83-84
Knockout Cutters .....	85
Nut Augers .....	37
Parting Tools .....	62-66
Plain Expansive Bits .....	8-74
Power Pump, Hydraulic Unit .....	101
Punches, Knockout .....	82-83-84
Punches, Radio Chassis .....	81
Push Drills .....	6
Push Drill Accessories .....	7
Pushers, Hydraulic Pipe .....	98-99-100
Radio Chassis Punches .....	81
Rafting Augers .....	41
Razor Blade Draw Knives .....	67-74
Reamers, Brace .....	42
Ring Augers .....	40
Rose Countersinks .....	42
"S" Countersinks .....	42
Screw Adjusting Expansive Bits .....	10
Screw Driver Accessories .....	7
Screw Driver Bits .....	7-42
Screw Drivers, Spiral .....	4-5
Setfast Expansive Bits .....	9
Sets of Auger Bits .....	18-19
Sets of Chisels .....	50-51
Ship Augers .....	28-32-33-34-35
Ship Auger Bits .....	20
Ship Auger Car Bits .....	30-31

## Tools for the Craftsman



	Page
Short Socket Firmer Chisels .....	46-73
Short Turning Tools .....	62-63
Short Unispur Auger Bits .....	79
Single-Spur Car Bits .....	28
Single-Spur Ship Augers .....	28
Single-Twist Auger Bits .....	17
Slicks .....	56
Socket Butt Chisels .....	45-73
Socket Corner Chisels .....	56
Socket Firmer Chisels .....	47-48-49-73
Socket Firmer Gouges .....	58-59
Socket Framing Chisels .....	54-55
Socket Slicks .....	56
Solid-Center Auger Bits .....	13-16-72-78
Solid-Center Car Bits .....	24-26-27
Solid-Center Derrick Augers .....	38
Solid-Center Dowel Bits .....	22
Solid-Center Electricians' Auger Bits .....	78
Solid-Center Ship Auger Car Bits .....	27
Spiral Screw Drivers .....	4-5
Square Reamers .....	42
Steam Fitters' Augers .....	39
Steel Tube Benders .....	90
Stripping Knives .....	68-69
Tang Butt Chisels .....	60
Tang Firmer Chisels .....	61
Tools for Machine Use .....	102-103
Tree Surgeons' Chisels .....	52
Tree Surgeons' Gouges .....	53
Turning Chisels .....	62 to 64
Turning Gouges .....	62-65
Turning Tool Sets .....	63
Underground Augers .....	97
Unispur Auger Bits .....	14-16-77-79
Unispur Electricians' Auger Bits .....	77-79
Unispur Short Auger Bits .....	79
Unispur Solid-Center Auger Bits .....	16
Utility Auger Bits .....	15
Wood-Boring Brace Drills .....	21



# GREENLEE TOOLS

FOR THE CRAFTSMAN



## Discount Sheet Applying to Catalog No. 33

Issued to \_\_\_\_\_

August 1, 1941



TRANSFER

24

JAN 19 1945

Serial Record Division  
The Library of Congress

Copy.....

**Greenlee Tool Co.**  
Rockford, Illinois



## AUGER AND BIT DEPARTMENT

No.	
3-4	Greenlee Plain Expansive Bits..... 50
5-6	Greenlee Setfast Expansive Bits..... 25
7-8	Greenlee Screw Adjusting Expansive Bits..... 25
	Set Boxes and Rolls when packed with Bits..... 35
	Set Boxes and Rolls when not packed with Bits..... 30
12	Greenlee Extension Lip Auger Bits..... 30-10-5
13	Greenlee Unispur Auger Bits..... 30-5
16	Greenlee Unispur Electrician Auger Bits..... 30-5
20	Greenlee Utility Auger Bits..... 50-10-5
21	Greenlee Solid Center Electrician Auger Bits..... 30-5
22	Greenlee Solid Center Auger Bits..... 40-10
25	Greenlee Solid Center Unispur Auger Bits..... 30-5
28	Greenlee Single Twist Auger Bits..... 30-5
31	Greenlee Double Speed Electrician Auger Bits..... 30-5
39	Greenlee Ship Auger Bits..... 20
42	Greenlee Solid Center Dowel Bits..... 30-10
43	Greenlee Dowel Auger Bits..... 30-10
44	Greenlee Short Unispur Auger Bits..... 30-5
46	Greenlee Wood Boring Brace Drills..... 40
48	Greenlee Bell Hanger Drills..... 30-10
53	Greenlee Solid Center Car Bits..... 30
55	Greenlee Extension Lip Car Bits..... 30-10-5
56-58	Greenlee Solid Center Car Bits..... 30-10-5
57	Greenlee Single Spur Car Bits..... 40-10-5
62-64	Greenlee Ship Auger Car Bits, full polish..... 25
62J-64J	Greenlee Ship Auger Car Bits, japanned twist..... 25-10
65	Greenlee Single Spur Ship Augers..... 40-10-5
66-68	Ship Augers, 1½" diameter or less, full polish..... 20
66J-68J	Ship Augers, 1½" diameter or less, japanned twist..... 20-10
66J-68J	Ship Augers, over 1½" diameter, japanned twist..... 10
81	Greenlee Steamfitters Augers..... 20
84	Greenlee Boring Machine Augers..... 25-10
88	Greenlee Nut Augers, 2" or less..... 25-10
88	Greenlee Nut Augers, over 2"..... 25
92-92X	Greenlee Solid Center Derrick Augers..... 30
95	Greenlee Earth Augers..... 50
96	Greenlee Ring Augers..... 25-5
97	Greenlee Rafting Augers..... 25-10
441-453	Greenlee Spiral Screw Drivers, enclosed spiral..... 40-10
447-459	Greenlee Spiral Screw Drivers, open spiral..... 45-10
482-483	Greenlee Automatic Push Drills..... 45-10-5
705-707-709	Screw Driver and Push Drill Attachments..... 45-10

## AUGER AND BIT DEPARTMENT—Continued

No.	
702	Greenlee "S" Brace Countersinks..... 20
703	Greenlee Rose Brace Countersinks..... 15
711	Greenlee Square Brace Reamers..... 20
723	Greenlee Screw Driver Bits..... 20
900-925	Greenlee Bit Extensions..... 50

## CHISEL AND KNIFE DEPARTMENT

Fancy Boxes for Chisel Sets.....	20
Leatherette Rolls for Chisel Sets.....	40
200 Greenlee Socket Butt Chisels.....	60-5
220 Greenlee Short Socket Firmer Chisels.....	60-5
230-236 Greenlee Socket Firmer Chisels.....	60-5
251 Greenlee Tree Surgeon Socket Chisels.....	30-10
261-265 Greenlee Socket Framing Chisels.....	12½
290 Greenlee Socket Slicks.....	5
295 Greenlee Socket Corner Chisels.....	Plus 5
330-336 Greenlee Socket Firmer Gouges.....	12½
341 Greenlee Tree Surgeon Socket Gouges.....	30-10
390 Greenlee Glazier Chisels.....	45-5
400 Greenlee Tang Butt Chisels.....	20
430 Greenlee Tang Firmer Chisels.....	20
476S-576S-596S Greenlee Short Turning Tools.....	50-5
474-476 Greenlee Turning Chisels, standard length.....	12½
574-576 Greenlee Turning Gouges, standard length.....	12½
594-596 Greenlee Parting Tools, standard length.....	10
600 Greenlee Razor Blade Draw Knives.....	25
625 Greenlee Heavy Stripping Knives.....	Plus 5
625X Greenlee Extra Heavy Stripping Knives.....	Plus 15
635 Greenlee Folding Handle Draw Knives.....	15
Chisel and Turning Tool Handles.....	10

### Net charge per dozen for bevel edges on—

Socket and Tang Butt Chisels.....	\$ .60
Short Socket Firmer Chisels.....	.60
Socket and Tang Firmer Chisels.....	.60
Socket Framing Chisels.....	1.25

Prices on tools and machines covered by pages 81 to 101 inclusive quoted on application only.

*Consumer 20%*  
*non-stock labor 20-10%*  
*stock labor 35%*

*all gov't agencies*  
*quoted same as*  
*consumer 20%*



# JAXON TOOLS

No.

22-B Jaxon Solid Center Auger Bits..... 45-10%

Doz. Net

J-3 Jaxon Plain Expansive Bits, small.....	\$8.50
J-4 Jaxon Plain Expansive Bits, large.....	10.70
600-B Jaxon Razor Blade Draw Knives, 8".....	7.73
600-B Jaxon Razor Blade Draw Knives, 10".....	8.44

## No. 800 BE Jaxon Socket Butt Chisels LT

1/8".....	4.93
1/4".....	4.93
3/8".....	4.93
1/2".....	4.93
5/8".....	5.22
3/4".....	5.22
7/8".....	5.93
1".....	5.93
1 1/4".....	6.50
1 1/2".....	7.07
1 3/4".....	7.78
2".....	8.48

## No. 820 BE Jaxon Short Socket Firmer Chisels LT

### No. 830 BE Jaxon Socket Firmer Chisels LT

1/8".....	5.27
1/4".....	5.27
3/8".....	5.27
1/2".....	5.27
5/8".....	5.74
3/4".....	5.74
7/8".....	6.53
1".....	6.53
1 1/4".....	7.00
1 1/2".....	7.36
1 3/4".....	9.20
2".....	9.79